

SIMPLY CLEVER

ŠKODA



ŠKODA CITIGO



Me and my girls.

Sharing notes on baby names, baby food and changing diapers had deepened our friendship. Now Eva and Anna were to inherit our friendship. We agreed to meet at the farmers market in Prague - an old childhood tradition of Martina and I. It was nostalgia. We retold memories to our daughters who were amused by their giggly mothers.



The day ended our adventures but only with a promise to do this again next week. Let's bridge them in the comfort of our new ŠKODA Citigo.



It happened one day.



Like love, friendship too needs refreshment at times. Rome promised a break from old routines and habits so we headed there, hunting for surprises. Every winding street whispered an invitation. And just like that, new shops, new cafés and new experiences suddenly said hello. The streets are waiting for us to discover them with the convenient CV sensor in our new ŠKODA Citigo.



The never ending song.

Being DJs was our excuse to make friends and meet fans of music. Before our regular jobs beckoned us back the next week, Fabian and I had two last gigs that Saturday night. The first one was a sell out. They loved us. The swelling Berlin fans queued up for us at the second club. Success followed us there too. As I started packing with bittersweet memories I couldn't believe my eyes. Our music idol teared through the applause that still filled the room. The biggest DJ on this planet was to become our saviour. Meet him on [facebook.com/skoda](https://www.facebook.com/skoda). Big fun needs big space. We are prepared with the large boot of our new ŠKODA Citigo.





A family by choice.



Home is a place I missed as an exchange student in London. A few others like me arranged a meet up in the endless greens of Hyde Park. It felt like meeting myself again and again. We all had similar stories to tell of life in pulsating London and of our homes we would soon return to. Frisbee, music and barbecue did the rest and those once strangers soon became friends. London suddenly didn't feel grey or cold anymore. For everyone else it was just another lazy Sunday in the park. For us it was the quickest flight back home. Friends are precious. I drive them home safely and comfortably in my new ŠKODA Citigo. Get our free Meet App:



A second first date.

Eighteen years of wedlock had deepened our love but faded the romance. Memories that began in Paris were begging to be revived. With our bikes on board, a long drive brought us to the city that had played cupid once upon a time. Days were filled chasing spots where we first held hands, first kissed and first said goodbye. Evenings took us to old friends who now, like us, looked different but had changed little since that summer. We didn't renew our vows. Instead we went into our past and brought it home as a souvenir. Some people just belong together. And so does the SKODA Citigo and the SKODA Genuine Accessories.



"THIS MUST BE A ŠKODA" will come to your mind upon first glance. Its distinct and confident design with a finned grille set in a chrome-plated frame, large windows and precisely shaped headlamps makes the new ŠKODA Citigo a proud and fitting member of the ŠKODA family.



The contours of the bottom window edges rise gently, giving the car a pleasant dynamic feel when viewed from the side. You can also choose **SunSet**: glass with a more pronounced tint for the rear, which will improve the exterior look and passenger comfort. The rear windows in the five-door version tip out. The car is also available in a three-door version.



The **electrically-adjustable panoramic sunroof**, which opens a large space over the front seats, increases the passengers' enjoyment of the ride. It is also a unique design feature.



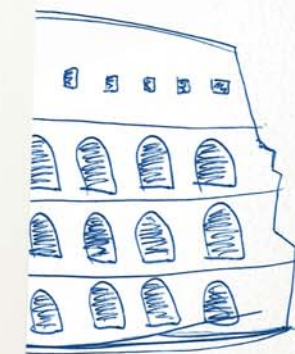
The vertical fifth door is topped with an effective spoiler with an integrated extra stop lamp. The massive **rear bumper** gives the car the necessary amount of robustness.



The **tail lights**, located just over the bumper, are obviously based on a fresh design and functional concept. They feature an important detail: the C-shaped lighting, included in all the current ŠKODA models.



Roma



"ALWAYS READY TO HAND" was the main idea behind the interior design concept of the ŠKODA Citigo. Wherever you look, you will find Simply Clever solutions, which will make your drives even more pleasant. Oh, and by the way, if you look upwards you will be rewarded with a very special view.

The **drinks holder** on the centre console is easily accessible to all passengers.



The **net pockets** on the sides of the front seats are practical for storing small items.



In the three-door version, the rear seat passengers can use **storage pockets** at the sides of the rear seats, which can also hold drink bottles.



Use the **clip on the dashboard** to fix a photo or document you want to keep close at hand.



A special **pocket for a reflective vest** is located under the driver's seat, ensuring it's immediately within reach if you need it.



Both the front doors have convenient **storage compartments** designed not only for maps and magazines but also 1-litre bottles.



The spacious **glove compartment** in the dashboard comes as open or lockable depending on the equipment version. When closed, a bag may be hung on a **foldable hook**.



External appliances can be transported safely in the **multimedia bracket**.

Simply Clever





WHAT A NICE VIEW! Even if you don't look out of the window. The functional and well-designed dashboard of the Citigo offers a lot of what you are used to from ŠKODA.



The **leather steering wheel with chrome elements** enhances your joy of driving the car. The top offer includes a 3-spoke sports steering wheel in perforated leather with black stitching.

The **Funky radio**, which enables DAB reception (Digital Audio Broadcast), features many functions including a music CD and CD-MP3 player. It can also be connected to the Move&Fun multifunctional mobile navigation.



The controls for the **electrically adjustable front windows** and **external mirrors** are conveniently located in the door panelling.



The **combined instrument panel** has a pleasant backlighting. The specific feature of the Citigo is an onboard computer with a digital coolant temperature indicator.





The angle of the open rear door on the photo is illustrative only in order to present the spaciousness of the rear passenger seating area.

SMALL BUT SPACIOUS. What may sound like a contradiction actually describes the rear of the new ŠKODA Citigo perfectly. Its luggage compartment offers enough room for all the things you need in the city. And if you still need more space, the rear seats can be folded to expand the capacity to 951 litres and up to 2 metres in length!



In the basic arrangement, the **luggage compartment** has a capacity of 251 litres, which ranks it above average in its class.



The **double vertical net** will reliably prevent your stuff from moving around. Plus you will see clearly where you put things.



There are four convenient **hooks** for hanging or attaching your bags at the sides of the luggage compartment.



The effortlessly **foldable backrest of the front passenger seat** enhances the utility value of the car.



The **mid-level luggage compartment floor** facilitates easier luggage handling by placing the bottom of the compartment close to the level of the loading edge. In addition, it provides a discreet storage space under the bottom of the luggage compartment floor.

Large luggage compartment





Best in Class. Passive Safety.

In addition to the **driver and front passenger airbags**, the standard equipment version includes special **Head-Thorax side airbags**, which can protect the heads and bodies of those in the front seats in a side impact.



"SAFETY FIRST" is the motto we always keep in mind when we build our cars. Especially the city with its stop-and-go traffic requires an elaborate safety concept. Therefore, the ŠKODA Citigo offers several new features in addition to the essential safety prerequisites. And that's why it also comes with a very special distinction: best in its class, active and passive.



Best in Class. Active Safety.

Fog lamps integrated in the front bumper spoiler contribute to increased safety in reduced visibility conditions.



Parking the Citigo is easy due to its excellent manoeuvrability. Moreover, you can be assisted by three **parking sensors** integrated in the rear bumper, which check the car's distance from any obstacles.



The unique **City Safe Drive system** is a novelty for safer driving in crowded city streets in particular. It has an emergency brake function and a CV (Closing Velocity) sensor, which monitors the traffic in front of the car within 10 m at up to 30 km/h. In case the driver fails to react to an obstacle in time, the system can prevent collision.



SET

The **TPM** (Tyre Pressure Monitoring) is a system that utilises data from the **ABS** (Anti-lock Braking System) sensors. Any decrease in the under-inflated tyre revolution speed is indicated on the instrument panel to alert the driver.





Unusual agility. Efficient engines.



LESS IS MORE. New technologies in the ŠKODA Citigo lead to lower CO₂ emissions to give you even more driving pleasure. And as the city is already loud enough, its engine also excels with an extraordinarily low noise.



Cutting-edge **semi-automatic 5-speed transmission**, available for both the engine versions offered, provides easy and comfortable control.

The **3-cylinder 1.0 MPI/44kW or 55kW petrol engines** are noted for refined running, economic operation even at higher speeds and excellent acceleration. Both the engines are particularly suitable for city traffic but you will be pleased with their performance wherever you drive.



Drivers who associate enjoyable driving with manual transmission may choose a conventional **mechanical 5-speed version**.



Semi-automatic transmission



ŠKODA Citigo G-TEC. Environment friendly. Budget friendly.



The ŠKODA Citigo 1.0 MPI/50kW G-TEC engine produces just **79 g/km CO₂**, reducing nitrogen oxide emissions and emitting no solid particles. Inside, two safely designed CNG tanks can carry 72 litres of fuel. To stretch driving flexibility we've also equipped it with a 10-litre petrol tank. In other words, you can **travel nonstop for up to 600 kilometres** skipping all gas stations on the way. All our G-TEC vehicles come fitted with ŠKODA's proprietary Green tec version, which means less driving costs without costing the environment too much.

LOVE FOR THE ENVIRONMENT. Driving shouldn't put a strain on either the environment or on your wallet. With this in mind, CNG (Compressed Natural Gas) promises a much greener alternative to conventional fuels.



The **Start-Stop system** automatically switches off the engine when you are waiting at the traffic lights or moving slowly in a queue of cars. The engine restarts once you push the clutch pedal. **Energy recovery functionality** further reduces engine load and increases fuel efficiency by utilising the car's kinetic energy for battery recharging.



The car is equipped with **automatic switching between the two fuel systems**. The car's engine is started using petrol and then switches to CNG drive. The indicator to the right shows the active regime. The display panel then provides information concerning the fuel level plus current and average consumption. A symbol warns drivers when the fuel level is low.





ŠKODA Citigo Monte Carlo. For those who seek thrill in style.



The ŠKODA Citigo Monte Carlo features black exterior elements, which give the car a unique style and a ferocious expression. The specific features in a black design include the front grille frame, the front bumper spoiler, the external mirrors, the roof spoiler and the diffuser. The car is decorated with black foils, while the black bodywork has silver foils. Both the 3-door and 5-door version comes with a sports chassis (with the exception of the G-TEC version).



The **sports interior** with a glossy black dashboard and a black ceiling has upholstery in a black/red combination. The **3-spoke steering wheel** comes in perforated black leather with red stitching.



The **knob and sleeve of the gear stick and the handbrake handle** are in black leather with red stitching.



The distinct style is underlined by the **15" Auriga alloy wheels** in a black metallic design or the optional 16" Serpens alloy wheels.



You can find the Monte Carlo inscription on the **front door sill decorative foils**.





The **Move&Fun PID** combines the features of an on-board computer, navigation system and hands-free set. Using Bluetooth, this multifunctional appliance is able to connect to the internet via a mobile phone and download data for its applications. The software can also be updated on www.garmin.com. The prerequisite for complete connection of your PID with the car is the factory-installed extra equipment: preparation for the Move&Fun navigation system.



Original textile or rubber **foot mats**, on offer in sets of four, help you keep the car interior tidy.

The comfort and practicality of the car is increased by the **front armrest** with a built-in storage compartment.



The **decorative door sill foils** increase the attractive look of the car and protect the thresholds from damage.



The **16" Serpens alloy wheels**, which enhance the exterior's dynamic look, are available in three designs: metallic black (left), metallic silver (right) and white.

ŠKODA GENUINE ACCESSORIES include various products ranging from exclusive alloy wheels to mobile navigation, sunblinds, foot mats and luggage compartment equipment, to roof carriers as well snow chains, mechanical drive locking systems and child seats. To maximise the emotional look of your Citigo, we recommend the Sport Design package with a set of decorative foils and 15" Auriga alloy wheels in a metallic black colour, which can be ordered with your new car or later on. You can find more information and an overview of our products in the accessories catalogue, available from your authorised ŠKODA partner.



Elegance interior in Ivory, with Ivory dashboard.



Elegance interior in black/grey, with black dashboard.



Ambition interior in black/Ivory, with Ivory/black dashboard.



Ambition interior in black/grey, with black dashboard.



Active interior in black/grey, with black dashboard.



Active interior in black/grey with blue stripes, and black dashboard with blue highlights.

Elegance version standard equipment:
14" alloy wheels, fog lamps, electrically-
adjustable heated external mirrors

Ambition version standard equipment:
electric front windows, remote control
central locking, photo clip, bag hook on
glove compartment, pockets on inner sides
of front seats

Active version standard equipment:
ABS (Anti-lock Braking System), driver and
front passenger airbags, Head-Thorax side
airbags, external mirrors and door handles
in black colour





Unique **Colourstar fabric** in the central seat sections for the Quicksilver interior.



Quicksilver interior in black/Colourstar, with Quicksilver/black dashboard is an optional interior for the Elegance and Ambition versions.



Candy White uni



Sunflower Yellow uni



Tornado Red uni



Brilliant Silver metallic



Leaf Silver metallic



Spring Green metallic



Night Blue metallic



Deep Black metallic



5.5J x 15" **Auriga** alloy wheels for 185/55 R15 tyres; silver design.



5.5J x 15" **Auriga** alloy wheels for 185/55 R15 tyres; black design.



5.5J x 15" **Auriga** alloy wheels for 185/55 R15 tyres; white design.



5.0J x 14" **Apus** alloy wheels for 175/65 R14 tyres; silver design.



5.0J x 14" **Apus** alloy wheels for 175/65 R14 tyres; black design.



5.0J x 14" **Apus** alloy wheels for 175/65 R14 tyres; white design.



5.0J x 14" steel wheels for 165/70 R14 tyres with large **Aries** hub covers.



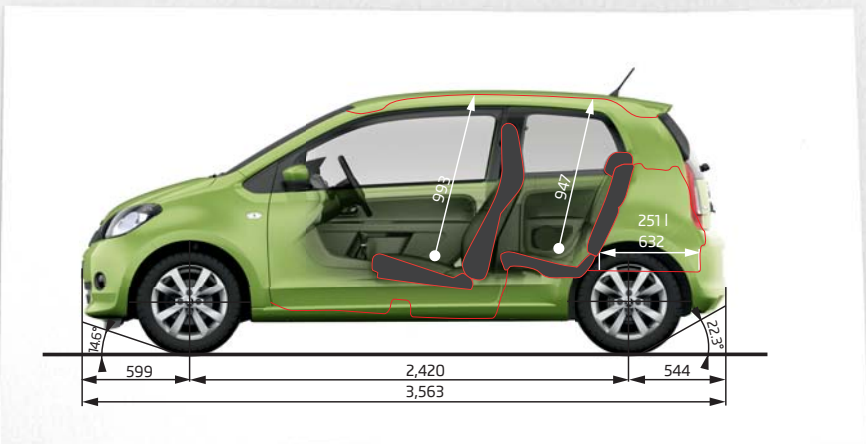
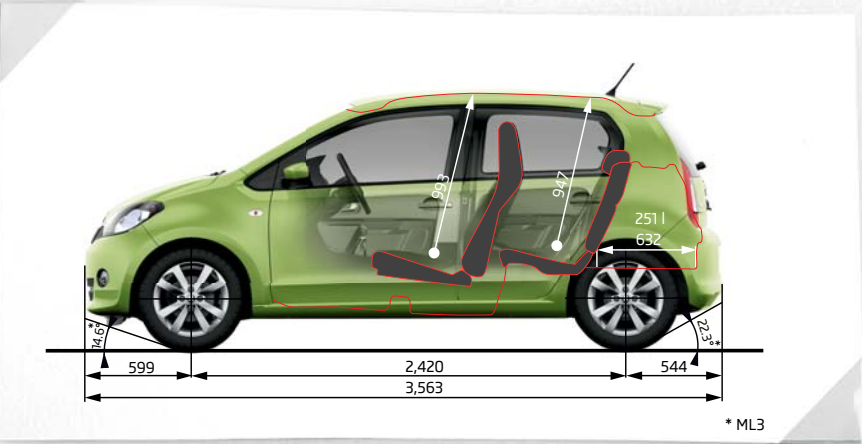
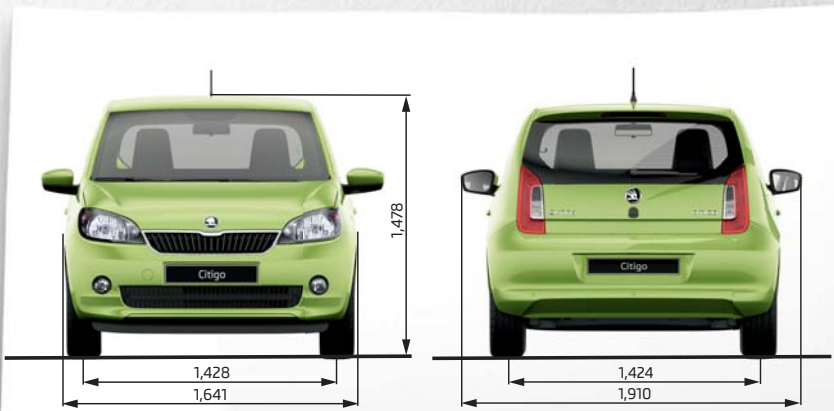
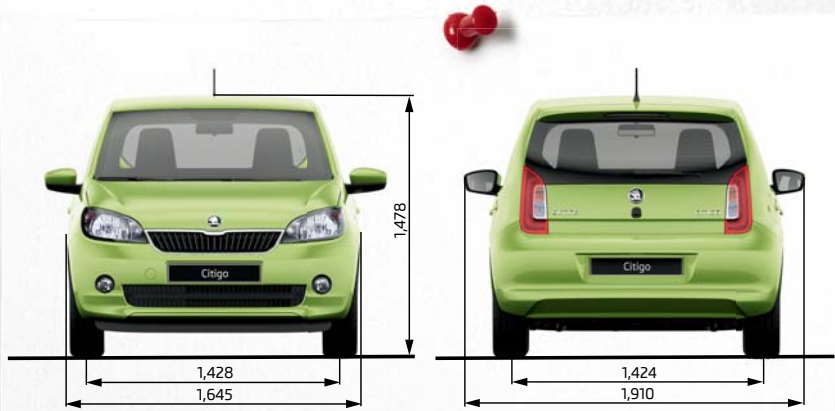
5.0J x 14" steel wheels for 165/70 R14 tyres with small hub covers.

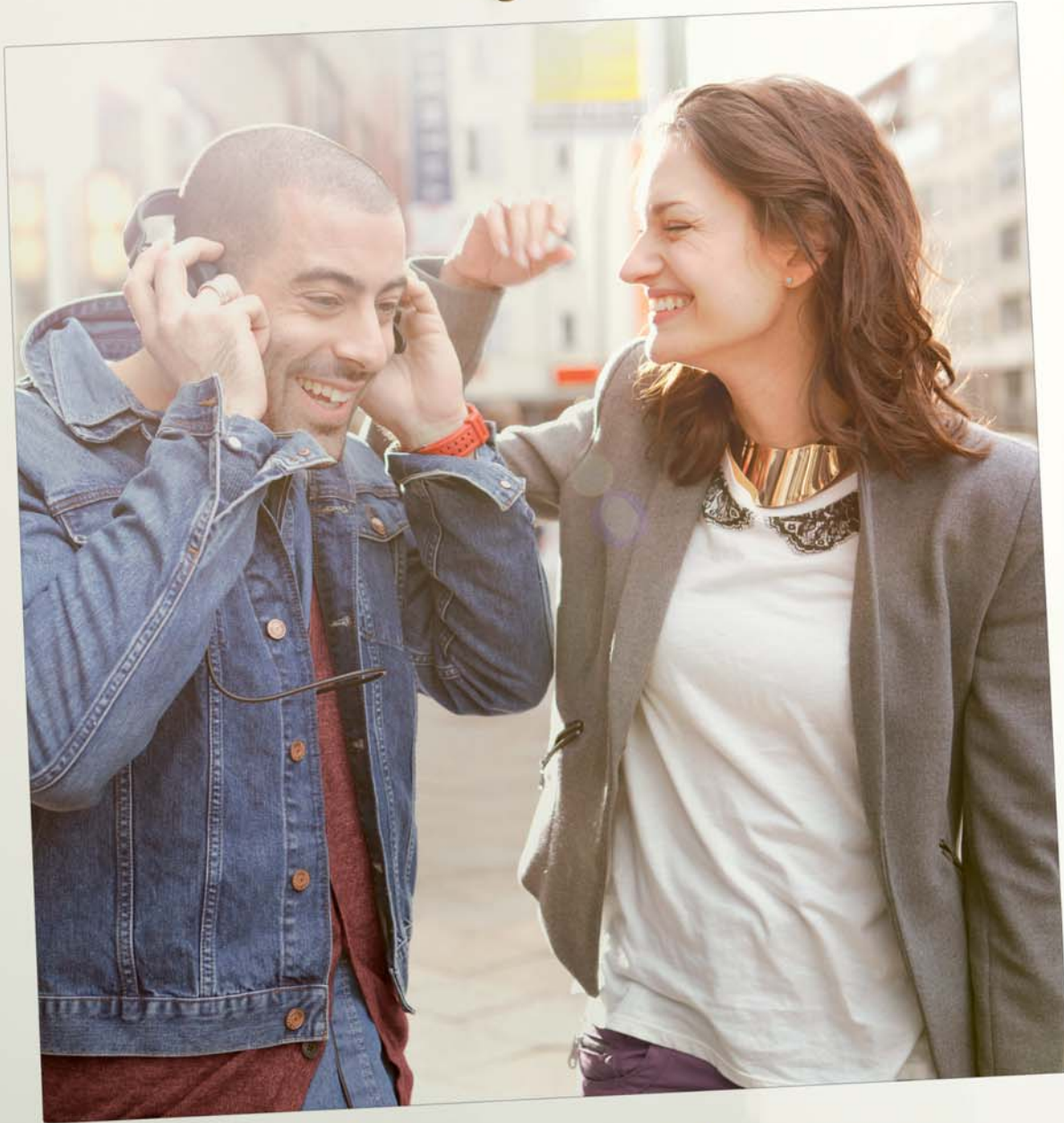
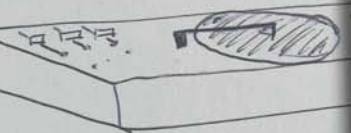
Technical specifications

Engine	1.0 MPI/44 kW	1.0 MPI/44 kW Green tec	1.0 MPI/55 kW	1.0 MPI/55 kW Green tec	1.0 MPI/50 kW G-TEC
	Petrol engine	Petrol engine	Petrol engine	Petrol engine	CNG/Petrol engine
Cylinders	3	3	3	3	3
Cubic capacity (cc)	999	999	999	999	999
Max. performance/Revs (kW/min ⁻¹)	44/5,000–6,000	44/5,000–6,000	55/6,200	55/6,200	50/6,200
Max. torque/Revs (Nm/min ⁻¹)	95/3,000–4,300	95/3,000–4,300	95/3,000–4,300	95/3,000–4,300	90/3,000
Air pollution regulation	EU5	EU5	EU5	EU5	EU5
Fuel	Unleaded petrol, RON 95/91*	Unleaded petrol, RON 95/91*	Unleaded petrol, RON 95/91*	Unleaded petrol, RON 95/91*	CNG/Unleaded petrol, RON 95
Performance					
Maximum speed (km/h)	160	161	171	172	164
Acceleration 0–100 km/h (s)	14.4 (15.3)	14.4	13.2 (13.9)	13.2	16.3
Fuel consumption 99/100					
– urban (l/100 km)	5.6 (5.3)	5.0	5.9 (5.5)	5.1	5.5 m³/100 km
– extra-urban (l/100 km)	3.9	3.6	4.0	3.7	3.8 m³/100 km
– combined (l/100 km)	4.5 (4.4)	4.1	4.7 (4.5)	4.2	4.4 m³/100 km
CO ₂ emissions (g/km)	105 (103)	95	108 (105)	98	79
Turning circle diameter (m)	9.8	9.8	9.8	9.8	9.8
Power transmission					
Type	Front-wheel drive	Front-wheel drive	Front-wheel drive	Front-wheel drive	Front-wheel drive
Clutch	Hydraulic single dry clutch disc	Hydraulic single dry clutch disc	Hydraulic single dry clutch disc	Hydraulic single dry clutch disc	Hydraulic single dry clutch disc
Transmission	Manual 5-speed (Semi-automatic 5-speed)	Manual 5-speed	Manual 5-speed (Semi-automatic 5-speed)	Manual 5-speed	Manual 5-speed
Weight					
Kerb weight – in standard version with a 75kg driver (kg)	929 (932)	940	929 (932)	940	1,031
Payload – incl. a driver and extra equipment (kg)	436 (433)	425	436 (433)	425	414
Total weight (kg)	1,290	1,290	1,290	1,290	1,370
Body					
Drag coefficient C _w	3-door or 5-door, 4-seater, 2-compartment 0.33; G-TEC: 0.34				
Chassis					
Front axle	McPherson suspension with lower triangular links and torsion stabiliser				
Rear axle	Compound link crank-axle				
Braking system	Hydraulic dual-diagonal circuit braking system Dual Rate vacuum assisted				
– front brakes	Disc brakes with inner cooling and with single-piston floating calliper				
– rear brakes	Drum brakes				
Steering	Direct rack-and-pinion steering with electro-mechanical power steering				
Wheels	5.0J x 14"				
Tyres	165/70 R14; Green tec, G-TEC: 175/65 R14				
Tank capacity (l)					
35; G-TEC: 12 kg + 10l					
Exterior dimensions					
Length (mm)	3,563				
Width (mm)	1,641; 1,645**				
Height (mm)	1,478; Green tec: 1,463; G-TEC: 1,480				
Wheel base (mm)	2,420				
Track front/rear (mm)	1,428/1,424				
Clearance (mm)	136; Green tec: 121; G-TEC: 134				
Interior dimensions					
Lateral room front/rear (mm)	1,417/1,389; 1,369/1,388**				
Effective head room front/rear (mm)	993/947				
Luggage storage space (max. l)					
– without spare tyre, with rear seat backrests upright/down	251/951; 959**; G-TEC: 213/913; 921**				
– with spare tyre the values are lower by 17l					

The listed values apply to the standard model without extra equipment.
* Using low-octane fuel may affect engine performance.

** Applies to the 5-door version.
() Applies to semi-automatic transmission.





BERLIN

Merchandise



Tattoo stickers



Tattoo stickers



ŠKODA Citigo Sport
white model car



ŠKODA Citigo Sport
red model car

General information

ŠKODA Service

Put your car in good hands. We give you good reasons to choose an authorised ŠKODA service partner.

We offer you first-class quality

Your car requires advanced technology. All the authorised ŠKODA service partners have special tools and quality diagnostic systems at their disposal to ensure the perfect functionality and reliability of your car.

Professionally trained staff by the manufacturer

The ever-rising standard of the technology used in our cars requires corresponding professional qualifications on the part of the staff. To meet this requirement, the manufacturer organises regular training for the authorised ŠKODA service partners in order to provide them with up-to-date information important for their activities.

Our motto: be fair and open with our customers

Careful, professional and friendly counselling for the customers upon acceptance of orders is just as important to us as diligence and completeness with respect to repairs and maintenance work. All this is continuously monitored by internal quality control.

Comprehensive range of services:

› Service inspections

The authorised ŠKODA service partner guarantees the performance of regular service inspections in accordance with the manufacturer's instructions and ensures the long-term functionality of your car. The service schedule informs you when the service inspection must be done.

› Body and paintwork service

Damage to the body and painted areas will be fixed by your authorised ŠKODA service partner in an expert manner, in accordance with the manufacturer's instructions, using ŠKODA Genuine Parts. This is important not only for your safety, but also for functionality and maintaining your car's value.

› Courtesy car

The authorised ŠKODA service partner can provide you with a courtesy car for the period of repair or service inspection.

› Pick up and delivery service

If you are unable to take your vehicle to the ŠKODA Service, an authorised ŠKODA service partner will arrange a date with you to pick up the car. The car will be delivered back to you after the service work has been completed.

The listed services represent only part of the wide range of ŠKODA Service offers, which may vary from country to country. Please contact your authorised ŠKODA service partner for further details.

ŠKODA Applications

ŠKODA Service App – ŠKODA Service in your pocket

The ŠKODA Service application is designed for smartphones operating on iOS and Android systems and its purpose is to help ŠKODA customers in any difficult situation they may encounter on their travels.

ŠKODA Manual App – know your vehicle

The ŠKODA Manual application is aimed at users of tablet PCs who

are interested in ŠKODA vehicles or already own one. The application contains a full featured digital version of the owner's manual for all current ŠKODA models.

ŠKODA Genuine Accessories

ŠKODA Genuine Accessories offer you a wide assortment oriented to five main product groups (sport and design, music and communication, comfort and utility, transport and safety) and bicycle products. For more detailed information on the complete ŠKODA Genuine Accessories range see the individual ŠKODA model catalogues.

ŠKODA Genuine Parts

Safety

ŠKODA Genuine Parts are identical to those used in the assembly of ŠKODA vehicles. The use of first-class materials and technologies guarantees safe and worry-free motoring.

Availability

ŠKODA AUTO offers a complete range of parts and equipment items used in the vehicle's series production and does not merely focus on high-turnover parts. Our objective is to secure ŠKODA Genuine Parts supplies essential for the operation of the vehicle for a period of 15 years after the end of the model run.

Long service life

The use of first-rate materials and manufacturing technologies applied in the production of ŠKODA Genuine Parts ensure their maximum reliability and long life. As proof, we have extended the genuine batteries warranty to three years.

Environment protection

The ŠKODA Genuine Parts range includes exchange parts, which are manufactured with a low environmental impact in terms of waste, excess heat and water contamination.

Information on the internet

Information is available at www.skoda-auto.com to assist you in deciding which vehicle suits your needs, thanks to the detailed descriptions and photographs of all our models. Visit www.facebook.com/skoda and become a fan of ŠKODA to receive the latest updates and get in touch with our community.

ŠKODA Finance

ŠKODA Finance provided by ŠkoFIN offers solutions for both individuals and businesses. Purchase your car with favorable conditions without additional costs. You can learn about the current credit or lease offer through any authorised ŠKODA partner.

Global fleet

The ŠKODA AUTO Global Fleet Services offer B2B fleet solutions to customers with all kinds of requirements. A fleet made up of ŠKODA cars offers unmatched roominess, long-lasting quality, safety, low total costs of ownership and as a result excellent value for money. You can find more information about our products and services at www.skoda-auto.com/fleet.

One of the most important goals of ŠKODA AUTO is the development and manufacture of products that are as environmentally friendly as possible throughout their life cycle phases, placing principal emphasis on the selection of recyclable materials. Our ŠKODA cars are produced using progressive types of technology in modern production facilities that meet the strictest criteria. Anticorrosive protection of the cars' painted parts is based exclusively on lead-free cathaphoresis (KTL) and water-soluble paints.

Our company strategy includes limiting fuel consumption and emissions. As a result, the engines we offer meet the current emission regulations. All ŠKODA products are made using manufacturing processes that adhere to the laws and regulations concerning the protection of soil and water. As a result of these activities, ŠKODA cars meet technical, safety, quality and environmental requirements. ŠKODA AUTO contributes to the preservation of a clean environment and provides mobility and comfort to its customers.



Simply Clever



5 star NCAP safety rating



Semi-automatic transmission



City Safe Drive




Five doors



Sunroof



Large luggage compartment

The environmental logo expresses ŠKODA AUTO's awareness of, responsibility for and attempts at the sustainable development of the company and a friendly approach to life and nature. 



Download the ŠKODA Interactive Catalogue and explore the car from every angle.

Available on the App Store




ŠKODA Manual App

Luxury manual on tablet PC

Some models in this catalogue are shown fitted with optional or extra equipment not necessarily included in the standard equipment. All details of technical specifications, design, equipment, materials, guarantees and appearance were accurate at the time of going to print. However, the manufacturer reserves the right to make any changes without prior notice. The information included in this catalogue is for guidance only. Due to printing technology limitations, the colours of paints or other materials shown in this catalogue may differ from reality. For up-to-date information and further details on standard and optional equipment, current prices and delivery terms and conditions contact your authorised ŠKODA partner. This catalogue was printed on cellulose paper which was bleached without using chlorine. The paper is 100% recyclable.

www.skoda-auto.com

 facebook.com/skoda

Your ŠKODA partner:

C10220 05/14