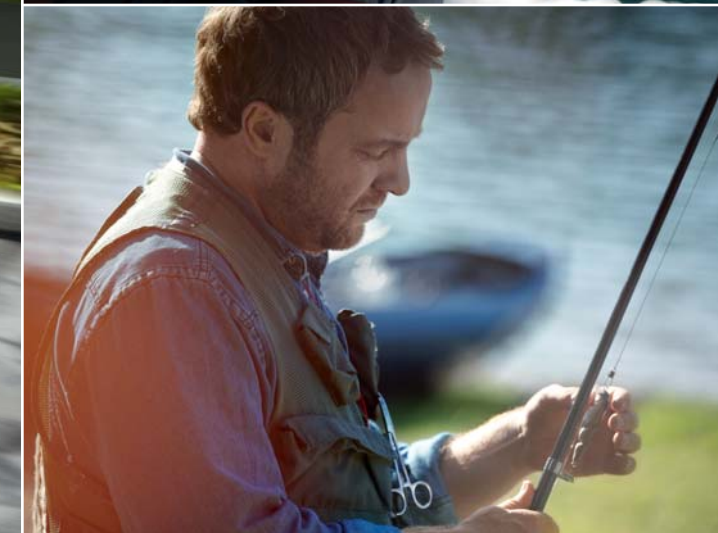


SIMPLY CLEVER

ŠKODA



ŠKODA RAPID



Multitasking isn't always a choice. Ask any man who's also a husband and a father. You have to be many people, in many places, all at the same time. Each day is unscripted, full of surprises that sometimes turn into challenges. Everyone wants something and they're all staring at the same guy. You. It's a job of great responsibility, but it's also the greatest joy you'll ever have.

While every dad does his best for his family, he can sometimes use a little help. So we've prepared our own toolkit for you. It's called the **ŠKODA Rapid**. A family car that doesn't look like one. Its pure, elegant contours and modern design make a bold statement. But like you, we don't appreciate beauty without brains either. So we packed in enormous room and plenty of useful equipment.

As a member of the ŠKODA fleet, the Rapid model also offers numerous Simply Clever details and solutions. For example, you can hang the bags that could become damaged while driving on the strong hooks in the luggage compartment.

It's a small detail but, just like in life, it's the little things that often make a big difference. And this thinking guides everything we do.

That's Simply Clever. That's ŠKODA.

And this is your ŠKODA Rapid.



There are some things he won't learn at school.





Usually I hate shopping. Usually...



Thankfully there is no holiday from being a dad.



The **design** of the Rapid will captivate you with its simplicity and precision. It represents the contemporary design language of the ŠKODA brand that brings with it clear lines, clean surfaces and balanced proportions. The **front grille** together with the headlamps creates a design whole that visually widens the car. The **ŠKODA logo** distinctively stands out above the chrome frame of the grille.

A characteristic feature of the ŠKODA design are the sharp edges of the **headlamps and fog lamps**. The lower parts of the headlamps have angled covers reminding one of the elegance of Bohemian crystal. With regard to functionality, the top option is the Xenon headlamps plus fog lamps with Corner function and daytime running lights.



The Rapid has large and distinctive **ŠKODA lettering** in the rear. The large **rear lights**, which wrap around to the sides, illuminate the dark in the traditional ŠKODA way with the letter C.



Thanks to the black B-column, the glazed area of the side windows appears uniform and suggests a large interior space. **SunSet**, windows with a higher density of tint in the rear, underscores the elegance of the Rapid and protects rear passengers from sunshine.



When looking at the Rapid from the rear or the side you notice not only the **elegant clean surfaces and dynamically sharp lines**, but also the robustness of the car, which evokes reliability and strength. The large 5th door is a design feature that is highly functional, because it gives you excellent access to the luggage compartment. The angled surfaces cannot be overlooked and create space for the number plate.



The **ice scraper** mounted on the fuel cap will be within reach the moment you need it. In short, you will begin to appreciate the Simply Clever details of the Rapid model from the very first frost.



The **double-sided carpet** in the luggage compartment has fabric on one side and a washable rubber finish on the other. If necessary, you can easily turn it over and even muddy boots will not prevent you from keeping the luggage compartment clean and tidy.

The **luggage compartment cover** can sometimes interfere when loading larger objects, such as a children's bicycle. If you do not want to remove it entirely, you can put it in the folded down position and after unloading it will still be available.



The **net programme**, which consists of two vertical nets and one horizontal net on the floor, enables you to easily secure things so they do not shift while driving.



You can hang not only bags but also camping equipment and other things that could become damaged while driving, using the **strong hooks** in the luggage compartment. You can extend the storage options of the car with the **storage compartments** behind the rear wheel arches.

Whether you are going on a big shopping spree or on a family vacation, the Rapid can adapt to current requirements and handle all circumstances extremely well thanks to the **Simply Clever details and solutions**. Many of those can be found in the luggage compartment. Folding down the rear seats increases the basic **volume of the luggage compartment of 550 litres** up to a total of **1,490 litres**. If necessary, you can fold down one or two backrests and get more storage space while there remains a place for seating in the rear.

Storage compartments and Simply Clever details will make your daily use of the car more pleasant and help you keep order inside. For example, the **eyeglasses compartment**, located above the interior rear-view mirror, will be particularly appreciated by drivers who change sunglasses for spectacles before driving.



External appliances can be transported safely in the **multimedia bracket** located in the **dual drinks holder** on the centre console.



The **closed storage compartment** in the lower part of the dashboard by the front passenger, in cars with Climatronic air conditioning, can cool drinks during your trip.



The **parking ticket holder** is located on the driver's side at the edge of the windscreen. From now on you will not have to look for a well visible place for the parking ticket. You wouldn't find a better one.



The **front armrest**, which conceals a storage compartment for small items, increases the comfort of both the driver and front passenger. Simply Clever details include **storage pockets** on the insides of the seat backrests, where you can store a map, mobile phone, etc.



You can create an **opening** between the **passenger compartment** and **luggage compartment** in cars with an armrest in the rear and thus easily transport longer objects in the interior.



One of the many Simply Clever features is located under the driver's seat. A special **pocket for a reflective vest** is located there, making the vest immediately within reach if you need it.



Snack wraps can be put into the **waste basket**, which can then be easily removed and emptied. The waste basket can be inserted into the storage compartments in both front and rear doors panelling. The **storage compartments in both front doors** can further hold a 1.5-litre bottle.



The **rear seat armrest** with an integrated **holder for two drinks** gives rear seat passengers the opportunity to enjoy the ride with refreshments.



Other places that the Rapid offers for storing bottles, cans or thermos during your trip are the **drink holders** opposite the rear seats and in the **storage compartments** in the rear doors. The **pockets** in the front seat backrests are ideal for things you want to keep within reach during your trip.



The **dashboard**, which matches the design of the exterior with its clean style, is practically arranged so the driver clearly sees everything at a glance. All the controls on the dashboard and the driver's door are within reach and placed where the driver intuitively expects them to be. The 3-spoke steering wheel comes in several versions including a **leather multifunctional steering wheel** with a decorative chrome moulding.

The **instrument panel** displays important information in the driver's field of vision. Depending on selected options, it has a tachometer and speedometer housed in chrome frames. The top version of the instrument panel is equipped with the Maxi DOT display, which not only displays data from the on-board computer (average consumption, range etc.), but data from other car equipment, such as air conditioning and the navigation system.



The **3-spoke leather multifunctional sports steering wheel**, which represents an exclusive offer, enables control of the radio and phone.



The **7-speed DSG** (Direct Shift Gearbox), supplied with the 1.4 TSI/90kW engine, combines the advantages of manual and conventional automatic transmissions. Its quick shifting results in excellent acceleration. When you select the optimum gear option, the DSG is able to keep the engine at optimal revolutions and, during economic driving, this results in low fuel consumption and thus lower CO₂ emissions.



You will surely not get lost in unfamiliar places with the **Amundsen+ navigation system**, which is controlled via a 5" touch-screen display. In addition to its many functions, the system can display information from the **Climatronic air conditioning** and thanks to the **MDI** (Mobile Device Interface), also from external equipment.



You can rely on the **safety** of the Rapid even under extreme conditions. Standard equipment includes a wide range of safety features, such as the **ESC** (Electronic Stability Control) including **ABS** (Anti-lock Braking System) and **six airbags**.* As standard are the **head airbags**, which create a wall when activated and protect passengers in the front and rear from potential head injuries.



Front side airbags are designed to protect the pelvis and chest of the driver and front passenger in the event of a side impact. The **front headrests** are height adjustable.



Large-volume **driver and front passenger airbags** activate in conjunction with the front seat belt pretensioners, which literally anchor you in the right place in the middle of the seat. The car can be equipped with the **deactivation of the front seat passenger airbag**, so you can place a child seat on the front seat.*

Families that fully occupy the car will certainly appreciate the option of equipping the car with a **third headrest in the rear**, designed for the passenger in the middle seat.



* Applies to EU countries.



The **ŠKODA GreenLine** vehicles reflect our continuous effort to reduce CO₂ emission levels. The highly advanced technical solutions enable a combination of exceptional concern for the environment with driving comfort. The **Rapid GreenLine** features, amongst other modifications, the Start-Stop system and energy recovery functionality. It is powered by the **1.6 TDI CR DPF/66kW** diesel engine, resulting in a combined consumption of **3.8 l/100 km** at a CO₂ emission level of a mere **99 g/km**. The GreenLine version can be identified by the original badge on the front grille.



The original **GreenLine badge** can also be found on the 5th door.



Standard equipment includes **15" steel wheels** with two-color hub covers, especially developed for the GreenLine version, with tyres with low rolling resistance.



The GreenLine version may be equipped with 15" **Carme alloy wheels** with tyres with low rolling resistance.



The **Start-Stop system** automatically switches off the engine, for example while waiting at the traffic lights or when moving slowly in a queue of cars. By pressing the clutch pedal the engine automatically restarts. The driver can deactivate the Start-Stop system with a button located on the central console. Engine load reduction and more economical running are further assisted by the **energy recovery functionality**, which enables an effective use of the car's kinetic energy for battery recharging.

Environment protection comes natural to every dad.





With the **ŠKODA Rapid StylePLUS** model you will look forward to each drive even more. The front of the car is decorated with a **glossy black strip on the front spoiler**. Other standard equipment includes **fog lamps with a Corner function** and daytime running lights, **external mirrors in black colour** and **decorative foils for side doors**. Another option accentuating the distinctiveness of the Rapid model is the **Style package** (without photo), which includes exterior elements in a black design, such as external mirrors, fog lamps and rear lights.

The stylish look as well as comfort of the model is further enhanced by the **SunSet windows**.

The 5th door features unique elements such as a **black spoiler** and **black decorative foil**.



The overall expression is completed by the **17" Ray alloy wheels in a silver/glossy black design**, which blend elegance with a sports style.



The Rapid StylePLUS comes with the attractive **Dynamic interior** featuring a dashboard decorated with the Piano Black strip, or the optional Piano White strip. The stylish interior further brings sports front seats, 3-spoke leather steering wheel, available also in a sports design as an option, leather gear stick and handbrake as well as noble steel foot pedal covers.



Some journeys can make a father feel like a boy.



At home my wife is the chef. Outside, I take the orders.



The **sport package*** consists of the front bumper spoiler, rear bumper spoiler, 5th door spoiler, decorative lateral strips and exterior mirror covers in black design. It can be extended by a black foil between the rear bumper reflectors. We recommend to combine it with the 17" Ray alloy wheels in metallic black design and a decorative strip of the front bumper in glossy black colour.



7.0J x 17" **Prestige** alloy wheels for 215/40 R17 tyres; matt black design



7.0J x 17" **Ray** alloy wheels for 215/40 R17 tyres; silver/glossy black design



7.0J x 17" **Savio** alloy wheels for 215/40 R17 tyres; silver/glossy black design



7.0J x 16" **Beam** alloy wheels for 215/45 R16 tyres; white design

We offer a 3-part **foldable snow shovel** made of alloy, including a practical textile cover.



You can securely attach other racks and holders, such as a bicycle carrier, box for skis or snowboards etc., onto the **basic roof rack**.



The **textile foot mats** offered in the Prestige version (pictured) and Standard version will help you keep the car interior clean. In addition to easy care they have outstanding durability.



When setting off for winter adventures, you may get into situations where **snow chains** are the only answer.



The **netting programme** reliably prevents the shifting of smaller items, and you can also easily see where you put things.

The **rubber boot mat**, which can be easily cleaned with water, will effectively protect upholstery from getting dirty.

* The styling kit presented in the catalogue may slightly differ from the products available from ŠKODA Genuine Accessories.



The **Elegance** equipment version comes in two colour versions. The first has black fabric seat upholstery and the dashboard and door panelling in a Satin black/Satin black combination. The second option has beige upholstery and the dashboard and door panelling in a Satin black/Stone beige combination. Both versions feature the Silver Brushed décor, which also decorates the steering wheel, or you can select the optional Piano Black décor. The interior has many chrome elements such as trim on the steering wheel, vent frames and more.



The **Ambition** equipment version can have either black fabric seat upholstery and the dashboard and door panelling in a Satin black/Satin black combination or upholstery in a grey/black combination and the dashboard and door panelling in a Satin black/Lava grey combination. Both versions feature the Graphite Metallic décor or you can select the optional Silver Brushed or Piano White décor. The steering wheel can be decorated with a Silver Brushed or a Piano White strip. The interior has many chrome elements such as interior door handles and more.



The **Active** equipment version always has grey/black fabric seat upholstery. The dashboard and door panelling come in either a Satin black/Satin black or Satin black/Lava grey combination.



The exclusive **Dynamic** interior is an option for the Elegance and Ambition equipment versions. You can choose the seat upholstery fabric in a combination of silver/black or red/black. The dashboard, lined with the Piano Black décor (as standard) or Piano White décor (as option), and door panelling always come in a Satin black/Satin black combination. Based on the equipment level, you can adorn the interior with many chrome features. The 3-spoke leather multifunctional steering wheel, which comes as standard, is available in a sports design (as option for Dynamic only). The sports version is always decorated with a Piano Black strip, regardless of the dashboard décor.



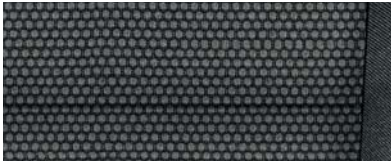
Active interior
grey/black fabric



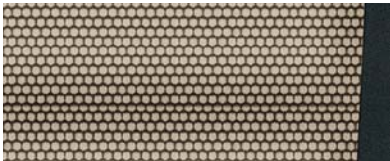
Ambition interior
black fabric



Ambition interior
grey/black fabric



Elegance interior
black fabric



Elegance interior
beige fabric



Dynamic interior* – Ambition, Elegance
silver/black fabric



Dynamic interior* – Ambition, Elegance
red/black fabric

* Extra equipment.



7.0J x 17" **Camelot** alloy wheels
for 215/40 R17 tyres



7.0J x 16" **Antia** alloy wheels
for 215/45 R16 tyres



7.0J x 16" **Dione** alloy wheels
for 215/45 R16 tyres



6.0J x 15" **Carme** alloy wheels
for 185/60 R15 tyres



6.0J x 15" **Propeller** alloy wheels
for 185/60 R15 tyres



6.0J x 15" steel wheels for 185/60 R15 tyres
with **Dakara** hub covers



5.0J x 14" steel wheels for 175/70 R14 tyres
with **Metis** hub covers



Candy White uni



Laser White uni*



Sprint Yellow special



Corrida Red uni



Pacific Blue uni



Moon White metallic



Cappuccino Beige metallic



Rallye Green metallic



Denim Blue metallic



Race Blue metallic



Brilliant Silver metallic



Rio Red metallic



Metal Grey metallic



Topaz Brown metallic**



Black Magic pearl effect

Colour	Colour code	Interior		
		Black	Grey	Beige
Candy White uni	9P9P	●●	●●	●
Laser White uni	J3J3	●●	●●	●
Sprint Yellow special	F2F2	●●	●	—
Corrida Red uni	8T8T	●●	●	●
Pacific Blue uni	Z5Z5	●●	●●	●●
Moon White metallic	2Y2Y	●●	●●	●
Cappuccino Beige metallic	4K4K	●●	●●	●●
Rallye Green metallic	P7P7	●●	●	●
Denim Blue metallic	G0G0	●●	●●	●●
Race Blue metallic	8X8X	●●	●●	●●
Brilliant Silver metallic	8E8E	●●	●●	●
Rio Red metallic	6X6X	●●	●●	●●
Metal Grey metallic	F6F6	●●	●●	●●
Topaz Brown metallic	4L4L	●●	●●	●●
Black Magic pearl effect	1Z1Z	●●	●●	●●

* Available from July 2014.
** Available from September 2014.

Combinations of body paint and interiors:

- very good
- good
- combination not recommended

Technical specifications

Engine	1.2 MPI/55 kW	1.2 TSI/63 kW	1.2 TSI/77 kW	1.4 TSI/90 kW	1.6 TDI CR DPF/66 kW	1.6 TDI CR DPF/66 kW GreenLine	1.6 TDI CR DPF/77 kW
	Petrol engine	Turbocharged petrol engine, high-pressure direct injection system	Turbocharged petrol engine, high-pressure direct injection system	Turbocharged petrol engine, high-pressure direct injection system	Turbocharged diesel engine, high-pressure direct injection common rail system	Turbocharged diesel engine, high-pressure direct injection common rail system	Turbocharged diesel engine, high-pressure direct injection common rail system
Cylinders/Cubic capacity (cc)	3/1,198	4/1,197	4/1,197	4/1,390	4/1,598	4/1,598	4/1,598
Max. performance/Revs (kW/min ⁻¹)	55/5,400	63/4,800	77/5,000	90/5,000	66/4,200	66/4,200	77/4,400
Max. torque/Revs (Nm/min ⁻¹)	112/3,750	160/1,500–3,500	175/1,550–4,100	200/1,500–4,000	230/1,500–2,500	230/1,500–2,500	250/1,500–2,500
Air pollution regulation	EU5	EU5	EU5	EU5	EU5	EU5	EU5
Fuel	Unleaded petrol, RON 95/91*	Unleaded petrol, RON 95/91*	Unleaded petrol, RON 95/91*	Unleaded petrol, RON 95/91*	Diesel	Diesel	Diesel

Performance							
Maximum speed (km/h)	175	183	195	206	184	186	190
Acceleration 0–100 km/h (s)	13.9	11.8	10.3	9.5	12.0 (12.2)	12.0	10.4
Fuel consumption 99/100 (l/100 km)							
– urban	8.0/8.1**	6.5/5.9***	6.9/6.3***	7.4/6.8***	5.6/4.8*** (5.6)	4.5	5.6/4.8***
– extra-urban	4.5/4.6**	4.4/4.3***	4.6/4.2***	4.8/4.6***	3.7/3.4*** (3.9)	3.4	3.7/3.4***
– combined	5.8/5.9**	5.1/4.9***	5.4/5.0***	5.8/5.4***	4.4/3.9*** (4.5)	3.8	4.4/3.9***
CO ₂ emissions (g/km)	134/137**	119/116***	125/116***	134/125***	114/104*** (118)	99	114/104***
Turning circle diameter (m)	10.9	10.9	10.9	10.9	10.9	10.9	10.9

Power transmission							
Type	Front-wheel drive	Front-wheel drive	Front-wheel drive	Front-wheel drive	Front-wheel drive	Front-wheel drive	Front-wheel drive
Clutch	Hydraulic single dry clutch disc	Hydraulic single dry clutch disc	Hydraulic single dry clutch disc	Twin coaxial clutch, electro-hydraulically operated	Hydraulic single dry clutch disc (Twin coaxial clutch, electro-hydraulically operated)	Hydraulic single dry clutch disc	Hydraulic single dry clutch disc
Transmission	Manual 5-speed	Manual 5-speed	Manual 6-speed	Automatic 7-speed DSG	Manual 5-speed (Automatic 7-speed DSG)	Manual 5-speed	Manual 5-speed

Weight							
Kerb weight							
– in standard version with a 75kg driver (kg)	1,135	1,155	1,175	1,230	1,265 (1,285)	1,263	1,265
Payload – incl. a driver and extra equipment (kg)	535	535	535	535	535	535	535
Total weight (kg)	1,595	1,615	1,635	1,690	1,725 (1,745)	1,723	1,725
Trailer load without brakes (max. kg)	560	570	580	610	630 (640)	–	630
Trailer load with brakes – 12% (max. kg)	750	900	1,100	1,200	1,200	–	1,200

Body	5-seater, 5-door, 2-compartment
Drag coefficient C _w	0.294–0.302 (according to engine version)

Chassis	
Front axle	McPherson suspension with lower triangular links and torsion stabiliser
Rear axle	Compound link crank-axle
Braking system	Hydraulic dual-diagonal circuit braking system vacuum assisted
– front brakes	Disc brakes with inner cooling and with single-piston floating calliper
– rear brakes	Drum brakes; alternatively disc brakes depending on the engine version
Steering	Direct rack-and-pinion steering with electro-hydraulic power steering
Wheels	5.0J x 14"; 6.0J x 15"
Tyres	175/70 R14; 185/60 R15

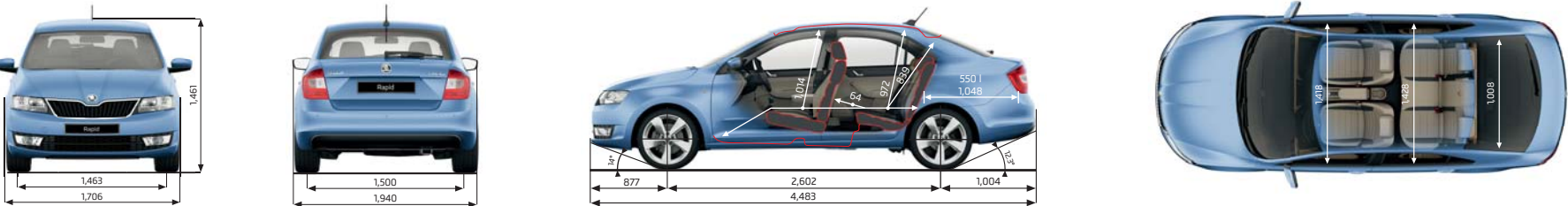
Tank capacity (l)	55
The listed values (except for values marked **) apply to the standard model without extra equipment.	

- * Using low-octane fuel may affect engine performance.
- ** At kerb weight with extra equipment exceeding 1,090 kg.

Exterior dimensions	
Length (mm)	4,483
Width (mm)	1,706
Height (mm)	1,461
Wheel base (mm)	2,602
Track front/rear (mm) – according to engine version	1,463; 1,457/1,500; 1,494
Clearance (mm)	136

Interior dimensions	
Lateral room front/rear (mm)	1,418/1,428
Effective head room front/rear (mm)	1,014/972
Luggage storage space (max. l)	
– without spare tyre, with rear seat backrests upright/down	550/1,490
– with spare tyre the values are lower by 20 l	

- *** Applies to Green tec version.
- Data was not available at the time of going to print.



Merchandising



Polo shirt with long sleeves



Children's magnets



Key chain



Notebook



Cap

General information

ŠKODA Service

Put your car in good hands. We give you good reasons to choose an authorised ŠKODA service partner.

We offer you first-class quality
Your car requires advanced technology. All the authorised ŠKODA service partners have special tools and quality diagnostic systems at their disposal to ensure the perfect functionality and reliability of your car.

Professionally trained staff by the manufacturer
The ever-rising standard of the technology used in our cars requires corresponding professional qualifications on the part of the staff. To meet this requirement, the manufacturer organises regular training for the authorised ŠKODA service partners in order to provide them with up-to-date information important for their activities.

Our motto: be fair and open with our customers
Careful, professional and friendly counselling for the customers upon acceptance of orders is just as important to us as diligence and completeness with respect to repairs and maintenance work. All this is continuously monitored by internal quality control.

Comprehensive range of services:
► **Service inspections**
The authorised ŠKODA service partner guarantees the performance of regular service inspections in accordance with the manufacturer's instructions and ensures the long-term functionality of your car. The service schedule informs you when the service inspection must be done.
► **Body and paintwork service**
Damage to the body and painted areas will be fixed by your authorised ŠKODA service partner in an expert manner, in accordance with the manufacturer's instructions, using ŠKODA Genuine Parts. This is important not only for your safety, but also for functionality and maintaining your car's value.
► **Courtesy car**
The authorised ŠKODA service partner can provide you with a courtesy car for the period of repair or service inspection.
► **Pick up and delivery service**
If you are unable to take your vehicle to the ŠKODA Service, an authorised ŠKODA service partner will arrange a date with you to pick up the car. The car will be delivered back to you after the service work has been completed.

The listed services represent only part of the wide range of ŠKODA Service offers, which may vary from country to country. Please contact your authorised ŠKODA service partner for further details.

ŠKODA Applications

ŠKODA Service App – ŠKODA Service in your pocket
The ŠKODA Service application is designed for smartphones operating on iOS and Android systems and its purpose is to help ŠKODA customers in any difficult situation they may encounter on their travels.

ŠKODA Manual App – know your vehicle
The ŠKODA Manual application is aimed at users of tablet PCs who

are interested in ŠKODA vehicles or already own one. The application contains a full featured digital version of the owner's manual for all current ŠKODA models.

ŠKODA Genuine Accessories

ŠKODA Genuine Accessories offer you a wide assortment oriented to five main product groups (sport and design, music and communication, comfort and utility, transport and safety) and bicycle products. For more detailed information on the complete ŠKODA Genuine Accessories range see the individual ŠKODA model catalogues.

ŠKODA Genuine Parts

Safety
ŠKODA Genuine Parts are identical to those used in the assembly of ŠKODA vehicles. The use of first-class materials and technologies guarantees safe and worry-free motoring.

Availability
ŠKODA AUTO offers a complete range of parts and equipment items used in the vehicle's series production and does not merely focus on high-turnover parts. Our objective is to secure ŠKODA Genuine Parts supplies essential for the operation of the vehicle for a period of 15 years after the end of the model run.

Long service life
The use of first-rate materials and manufacturing technologies applied in the production of ŠKODA Genuine Parts ensure their maximum reliability and long life. As proof, we have extended the genuine batteries warranty to three years.

Environment protection
The ŠKODA Genuine Parts range includes exchange parts, which are manufactured with a low environmental impact in terms of waste, excess heat and water contamination.

Information on the internet

Information is available at www.skoda-auto.com to assist you in deciding which vehicle suits your needs, thanks to the detailed descriptions and photographs of all our models. Visit www.facebook.com/skoda and become a fan of ŠKODA to receive the latest updates and get in touch with our community.

ŠKODA Finance

ŠKODA Finance provided by ŠkoFIN offers solutions for both individuals and businesses. Purchase your car with favorable conditions without additional costs. You can learn about the current credit or lease offer through any authorised ŠKODA partner.

Global fleet

The ŠKODA AUTO Global Fleet Services offer B2B fleet solutions to customers with all kinds of requirements. A fleet made up of ŠKODA cars offers unmatched roominess, long-lasting quality, safety, low total costs of ownership and as a result excellent value for money. You can find more information about our products and services at www.skoda-auto.com/fleet.

One of the most important goals of ŠKODA AUTO is the development and manufacture of products that are as environmentally friendly as possible throughout their life cycle phases, placing principal emphasis on the selection of recyclable materials. Our ŠKODA cars are produced using progressive types of technology in modern production facilities that meet the strictest criteria. Anticorrosive protection of the cars' painted parts is based exclusively on lead-free cathaphoresis (KTL) and water-soluble paints.

Our company strategy includes limiting fuel consumption and emissions. As a result, the engines we offer meet the current emission regulations. All ŠKODA products are made using manufacturing processes that adhere to the laws and regulations concerning the protection of soil and water. As a result of these activities, ŠKODA cars meet technical, safety, quality and environmental requirements. ŠKODA AUTO contributes to the preservation of a clean environment and provides mobility and comfort to its customers.

The environmental logo expresses ŠKODA AUTO's awareness of responsibility for and attempts at the sustainable development of the company and a friendly approach to life and nature.



Download the ŠKODA Interactive Catalogue and explore the car from every angle.



ŠKODA Manual App

Luxury manual on tablet PC

Some models in this catalogue are shown fitted with optional or extra equipment not necessarily included in the standard equipment. All details of technical specifications, design, equipment, materials, guarantees and appearance were accurate at the time of going to print. However, the manufacturer reserves the right to make any changes without prior notice. The information included in this catalogue is for guidance only. Due to printing technology limitations, the colours of paints or other materials shown in this catalogue may differ from reality. For up-to-date information and further details on standard and optional equipment, current prices and delivery terms and conditions contact your authorised ŠKODA partner. This catalogue was printed on cellulose paper which was bleached without using chlorine. The paper is 100% recyclable.