

SIMPLY CLEVER

ŠKODA



ŠKODA RAPID SPACEBACK



It will change the way you see space.



The space where we feel best is usually the one we helped to create. Our emotions, temperament and creativity are reflected in it, making it our own personal space. It's our house, flat, room, garden... or the **ŠKODA Rapid Spaceback**. A car that brings you space and the opportunity to express your individuality in it.

When you look at the Rapid Spaceback, in terms of space with regard to size, this compact hatchback offers rear passengers the most knee space and headroom in its segment. Its luggage compartment is the largest in its class. Likewise, the car is exceptional from the perspective of individualisation. There are so many elements you can decide on. We offer many attractive features that highlight the car's sporty design, including a large panoramic roof and 17" black alloy wheels.

As a member of the ŠKODA fleet, the Rapid Spaceback model also offers numerous Simply Clever details and solutions. For example, your iPod or mobile phone can be safely transported in the multimedia bracket on the centre console.

It's a small detail but, just like in life, it's the little things that often make a big difference. And this thinking guides everything we do.

That's Simply Clever. That's ŠKODA.

And this is your ŠKODA Rapid Spaceback.

A combi, a coupé and a hatchback – in one car.





Make it your own personal space.

The design outside turns heads. The glass roof inside lifts them.



Storage compartments and **Simply Clever details** increase practicality and comfort of your car and help you keep order inside. For example, the **eyeglasses compartment**, located above the interior rear-view mirror, will be particularly appreciated by drivers who change sunglasses for spectacles before driving.



External appliances can be transported safely in the **multimedia bracket** located in the **dual drinks holder** on the centre console.



The **closed storage compartment** in the lower part of the dashboard by the front passenger can, in cars with Climatronic air conditioning, cool drinks during your trip.



The **parking ticket holder** is located on the driver's side at the edge of the windscreen, which is a highly visible location.



The **front armrest**, which conceals a storage compartment for small items, increases the comfort of both the driver and front passenger. Simply Clever details include **storage pockets** on the insides of the seat backrests, where you can store a map, mobile phone etc.



You can create an **opening between the passenger compartment and luggage compartment** in cars with an armrest in the rear and thus easily transport longer objects in the interior.



One of the many Simply Clever features is located under the driver's seat. A special **pocket for a reflective vest** is located there, making the vest immediately within reach if you need it.



Snack wraps can be put into the **waste basket**, which can then be easily removed and emptied. The waste basket can be inserted into the storage compartments in both the front and rear door panelling. The **storage compartments in both front doors** can further hold a 1.5-litre bottle.



The **rear seat armrest**, with an integrated **holder for two drinks**, gives rear seat passengers the opportunity to enjoy the ride with refreshments.



The Rapid Spaceback also offers space for storing bottles, cans or thermoses in the **drink holders** opposite the rear seats and in the **storage compartments** in the rear doors. The **pockets** in the front seat backrests are ideal for things you want to keep within reach during your trip.



The **front design** of the Rapid Spaceback clearly belongs to the Rapid model line. The shape and composition of the individual exterior elements is defined by the contemporary design language of the ŠKODA brand. The headlamps smoothly flow from the distinctive **front grille**. The **ŠKODA logo** stands out perfectly against the rounded edge of the bonnet above the chrome frame of the grille.

Thanks to the black B and C-columns, the glazed area of the side windows appears uniform and suggests a large interior space. **SunSet**, rear windows with a higher density of tint, underscores the elegance of the exterior and protects rear passengers from sunshine.

The sharp edges of the **headlamps and fog lamps** are one of the characteristic features of the ŠKODA design language. The lower parts of the headlamps have angled covers reminiscent of the elegance of Bohemian crystal. With regard to functionality, the top option is the **Xenon headlamps** plus **fog lamps with Corner function** and daytime running lights.



The large **rear lights**, which wrap around to the sides, are shaped in the ŠKODA brand-typical "C" design. The **Rapid badge** is found next to the right rear light.



Looking at the Rapid Spaceback from the rear or the side allows you to fully take in the sporty style of the car. While the clean, sharp side lines suggest dynamism and spaciousness, the **rear** features balanced proportions and functional details, such as the **roof spoiler** or the **linear reflective surfaces** on the **rear bumper**. The number plate sits between the **angled surfaces**, which are becoming an essential identification feature of the new ŠKODA models.



The unique character of the Rapid Spaceback is enhanced by **design** features that are both distinctive and highly functional. The **panoramic roof**, made entirely of tinted glass, will give the whole crew a feeling of space as well as a great view of the sky. The car can also be equipped with **glass extended over the 5th door** or **darkened rear lights**.



The **luggage compartment**, which is at the absolute top in its class, offers basic capacity of **415 litres** and, with the rear seat backrests folded down, it extends to an impressive **1,380 litres**. If necessary, you can fold down only one or two backrests and get more storage space, while a place for seating remains in the rear.

Your everyday drive will be even more pleasant thanks to the **Simply Clever details** and solutions. Many of those can be found in the luggage compartment. The **luggage compartment cover** can be removed and placed in the folded down position when loading larger objects and quickly and easily put back in the original position after unloading.



Using the strong **hooks** in the luggage compartment, you can hang not only bags but camping equipment and other things that could become damaged while driving. You can extend the storage options of the car with the **storage compartments** behind the rear wheel arches.



The **ice scraper** mounted on the fuel cap will be within reach the moment you need it. In short, you will begin to appreciate the **Simply Clever details** of the Rapid Spaceback model from the very first frost.



The **mid-level luggage compartment floor** facilitates easier luggage handling by reducing the gap between the floor and the loading edge as well as levelling the step created by folding down the rear backrests. This **Simply Clever** equipment will further provide a hidden storage space.



The **double-sided carpet** in the luggage compartment has an elegant fabric finish when you are not transporting anything that might soil the car.



If you are coming back from a trip carrying wet or dirty equipment, you can simply turn the **double-sided carpet** with the washable rubber side up.



The **net programme**, which consists of two vertical nets and one horizontal net on the floor, enables you to easily secure things so they do not shift while driving.



The **dashboard**, which matches the design of the exterior with its clean style, is practically arranged so the driver clearly sees everything at a glance. All the controls on the dashboard and the driver's door are within reach and placed where the driver intuitively expects them to be. The Rapid Spaceback is exclusively equipped with a **3-spoke steering wheel**, available in several versions, including a **leather multifunctional steering wheel** with chrome elements. It is also available in a sports design (see next page).



You will surely not get lost in unfamiliar places with the **Amundsen+ navigation system**, which is controlled via a 5" touch-screen display. In addition to its many functions, the system can display information from the **Climatronic air conditioning** and, thanks to the **MDI** (Mobile Device Interface), from external equipment as well.

The **Swing radio** with a dual tuner, dual antenna and CD, CD-MP3 and CD-WMA players will provide you with great listening pleasure and entertainment on long drives.



The top version of the **instrument panel** is equipped with the Maxi DOT display, which not only displays data from the on-board computer (average consumption, range etc.), but also data from other car equipment, such as air conditioning and the navigation system.



In addition to maintaining the preselected speed, **cruise control** enables you to increase or reduce speed without using the pedals. This function is controlled by a button on the side of the cruise control.



You can select the reliable **manual transmission** (pictured left) featuring precise gear shifting and easy short-distance gear stick movement, available with most of the offered engines. The **7-speed automatic DSG** (Direct Shift Gearbox), supplied with the 1.4 TSI/90kW or 1.6 TDI/66kW engine, combines the advantages of manual and conventional automatic transmissions. It enables excellent acceleration and keeps the engine in an optimum working mode. With economic driving you can achieve reduced fuel consumption and CO₂ emissions. Most engine versions are offered as **Green tec**, thus their standard equipment includes the Start-Stop system and energy recovery functionality.



Your feeling of comfort in the interior will be enhanced by the **noble steel foot pedal covers**.



In cars equipped with the **front and rear electrically-adjustable windows**, the controls are conveniently placed in the driver's door panelling.



3-spoke leather multifunctional sports steering wheel, which represents an exclusive offer, enables control of the radio and phone.



You can rely on the **safety** of the Rapid Spaceback even under extreme conditions. Standard equipment includes a wide range of safety features, such as the **ESC** (Electronic Stability Control) including **ABS** (Anti-lock Braking System) and **six airbags**.* The **head airbags**, which come as standard, create a wall when activated and protect passengers in the front and rear from potential head injuries.



The **integrated telescopic headlamp washers** keep the headlamps perfectly clean.



The rear **Aero wiper** applies even pressure along its entire length. The car is also equipped with a front Aero wiper.



Large-volume **driver and front passenger airbags** activate in conjunction with the front seat belt pretensioners, which literally anchor you in the right place in the middle of the seat. The car can be equipped with the **deactivation of the front seat passenger airbag**, so you can place a child seat on the front seat.*



Front side airbags are designed to protect the pelvis and chest of the driver and front passenger in the event of a side impact. The **front headrests** are height adjustable.



The car can be equipped with a **third headrest in the rear**, designed for the passenger in the middle seat.

* Applies to EU countries.



The **ŠKODA GreenLine** vehicles reflect our continuous effort to reduce CO₂ emission levels. The highly advanced technical solutions enable a combination of exceptional concern for the environment with driving comfort. The **Rapid Spaceback GreenLine** features, amongst other modifications, the Start-Stop system and energy recovery functionality. It is powered by the **1.6 TDI CR DPF/66kW diesel engine**, resulting in a combined consumption of **3.8 l/100 km** at a CO₂ emission level of a mere **99 g/km**. The GreenLine version can be identified by the original badge on the front grille.



The original **GreenLine badge** can also be found on the 5th door.

The **Start-Stop system** automatically switches off the engine, for example while waiting at the traffic lights or when moving slowly in a queue of cars. By pressing the clutch pedal the engine automatically restarts. The driver can deactivate the Start-Stop system with a button located on the central console. Engine load reduction and more economical running are further assisted by the **energy recovery functionality**, which enables an effective use of the car's kinetic energy for battery recharging.



Standard equipment includes **15" steel wheels** with two-color hub covers, especially developed for the GreenLine version, with low rolling resistance tyres.



The GreenLine version may be equipped with **15" Carme alloy wheels** with low rolling resistance tyres.







The **ISOFIX DUO plus Top Tether child seat** will ensure the maximum safety and comfort of your little passengers when travelling because, in addition to Isofix belts, it is attached using the Top Tether system on its rear side. The seat has three adjustable positions (sitting, resting and lying) and is designed for children from 9 kg up to 18 kg.

The **protective rear seat cover** saves the interior of your car from getting soiled or damaged. You'll especially appreciate this product if your four-legged friend accompanies you for a drive.



Before you set off for some winter sports, you should get the **ski sack**, where you can fit up to four pairs of skis.



The **thermo-electric cooling box**, with a capacity of 20 litres, keeps food cool and fresh.



The **trunk grille**, fitted behind the rear seats, prevents luggage from shifting into the crew cabin. This maximises luggage compartment usage or enables a safe transportation of your pets.



You can securely attach other racks and holders, such as a bicycle carrier, box for skis or snowboards etc., onto the **basic roof rack**.



The **netting programme** reliably prevents the shifting of smaller items and you can also easily see where you put things.



The **protective pad under the child seat** protects the seat upholstery from wear and soiling.



The **ashtray in the centre console** can serve various purposes, including a storage space for small things.



17" **Savio** alloy wheel in silver/glossy black design.



17" **Savio** alloy wheel in silver/matt black design.



Rear mud flaps protect the chassis from mud and flying stones.



Decorative door sill covers with aluminium inserts effectively protect the door sills against mechanical damage when getting in and out of the car.

Detachable tow bar will allow you to tow a trailer with brakes of up to 1,200 kg, based on the engine version.



The **rear bumper cover foil** protects the rear bumper as well as the loading edge, while the triangle-shaped stripes improve visibility of your car.



The **transparent protective rear bumper cover foil** is an essential accessory for those who frequently transport objects that might scratch or dent the rear bumper.



The **rubber boot mat**, which can be easily cleaned with water, will outstandingly protect upholstery from getting dirty.

The **plastic boot dish** with raised edges prevents the car upholstery from getting soiled or damaged. The dish can be easily taken out and emptied or wiped clean.



The **Elegance** equipment version comes in two colour versions. The first has beige upholstery and the dashboard and door panelling in a Satin black/Stone beige combination. The second option has black fabric seat upholstery and the dashboard and door panelling in a Satin black/Satin black combination. Both versions feature the Silver Brushed décor, which also decorates the steering wheel, or you can select the optional Piano Black décor. The interior has many chrome elements such as trim on the steering wheel, vent frames and more.



The **Ambition** equipment version can have either black fabric seat upholstery and the dashboard and door panelling in a Satin black/Satin black combination or upholstery in a grey/black combination and the dashboard and door panelling in a Satin black/Lava grey combination. Both versions feature the Graphite Metallic décor or you can select the optional Silver Brushed or Piano White décor. The steering wheel can be decorated with a Silver Brushed or a Piano White strip. The interior has many chrome elements such as interior door handles and more.



The **Active** equipment version always has grey/black fabric seat upholstery. The dashboard and door panelling come in either a Satin black/Satin black or Satin black/Lava grey combination.



The exclusive **Dynamic** interior is an option for the Elegance and Ambition equipment versions. You can choose the seat upholstery fabric in a combination of red/black or silver/black. The dashboard, lined with the Piano Black décor (as standard) or Piano White décor (as option), and door panelling always come in a Satin black/Satin black combination. Based on the equipment level, you can adorn the interior with many chrome features. The 3-spoke leather multifunctional steering wheel, which comes as standard, is available in a sports design (as option for Dynamic only). The sports version is always decorated with a Piano Black strip, regardless of the dashboard décor.



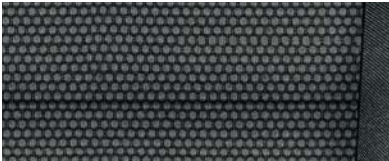
Active interior
grey/black fabric



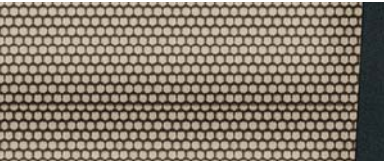
Ambition interior
black fabric



Ambition interior
grey/black fabric



Elegance interior
black fabric



Elegance interior
beige fabric



Dynamic interior* – Ambition, Elegance
silver/black fabric



Dynamic interior* – Ambition, Elegance
red/black fabric

* Extra equipment.



7.0J x 17" **Ray** alloy wheels for 215/40 R17 tyres;
silver/glossy black design*



7.0J x 17" **Camelot** alloy wheels
for 215/40 R17 tyres



7.0J x 16" **Antia** alloy wheels
for 215/45 R16 tyres



7.0J x 16" **Dione** alloy wheels
for 215/45 R16 tyres



6.0J x 15" **Carme** alloy wheels
for 185/60 R15 tyres



6.0J x 15" **Propeller** alloy wheels
for 185/60 R15 tyres



6.0J x 15" steel wheels for 185/60 R15 tyres
with **Dakar** hub covers



5.0J x 14" steel wheels for 175/70 R14 tyres
with **Metis** hub covers

* Available as part of the StylePLUS package.



Candy White uni



Laser White uni*



Sprint Yellow special



Corrida Red uni



Pacific Blue uni



Moon White metallic



Rallye Green metallic



Denim Blue metallic



Race Blue metallic



Topaz Brown metallic**



Brilliant Silver metallic



Cappuccino Beige metallic



Metal Grey metallic



Rio Red metallic



Black Magic pearl effect

Colour	Colour code	Interior		
		Black	Grey	Beige
Candy White uni	9P9P	●●	●●	●
Laser White uni	J3J3	●●	●●	●
Sprint Yellow special	F2F2	●●	●	—
Corrida Red uni	8T8T	●●	●	●
Pacific Blue uni	Z5Z5	●●	●●	●●
Moon White metallic	2Y2Y	●●	●●	●
Rallye Green metallic	P7P7	●●	●	●
Denim Blue metallic	G0G0	●●	●●	●●
Race Blue metallic	8X8X	●●	●●	●●
Topaz Brown metallic	4L4L	●●	●●	●●
Brilliant Silver metallic	8E8E	●●	●●	●
Cappuccino Beige metallic	4K4K	●●	●●	●●
Metal Grey metallic	F6F6	●●	●●	●●
Rio Red metallic	6X6X	●●	●●	●●
Black Magic pearl effect	1Z1Z	●●	●●	●●

* Available from July 2014.
** Available from September 2014.

Combinations of body paint and interiors:

- very good
- good
- combination not recommended

Technical specifications

Engine	1.2 MPI/55 kW	1.2 TSI/63 kW	1.2 TSI/77 kW	1.4 TSI/90 kW	1.6 TDI CR DPF/66 kW	1.6 TDI CR DPF/66 kW GreenLine	1.6 TDI CR DPF/77 kW
	Petrol engine	Turbocharged petrol engine, high-pressure direct injection system	Turbocharged petrol engine, high-pressure direct injection system	Turbocharged petrol engine, high-pressure direct injection system	Turbocharged diesel engine, high-pressure direct injection common rail system	Turbocharged diesel engine, high-pressure direct injection common rail system	Turbocharged diesel engine, high-pressure direct injection common rail system
Cylinders/Cubic capacity (cc)	3/1,198	4/1,197	4/1,197	4/1,390	4/1,598	4/1,598	4/1,598
Max. performance/Revs (kW/min ⁻¹)	55/5,400	63/4,800	77/5,000	90/5,000	66/4,200	66/4,200	77/4,400
Max. torque/Revs (Nm/min ⁻¹)	112/3,750	160/1,500–3,500	175/1,550–4,100	200/1,500–4,000	230/1,500–2,500	230/1,500–2,500	250/1,500–2,500
Air pollution regulation	EU5	EU5	EU5	EU5	EU5	EU5	EU5
Fuel	Unleaded petrol, RON 95/91*	Unleaded petrol, RON 95/91*	Unleaded petrol, RON 95/91*	Unleaded petrol, RON 95	Diesel	Diesel	Diesel
Performance							
Maximum speed (km/h)	172	180	193	203	182	184	190
Acceleration 0–100 km/h (s)	13.8	11.7	10.2	9.4	11.9 (12.1)	11.9	10.3
Fuel consumption 99/100 (l/100 km)							
– urban	8.0/8.1**	6.5/5.9***	6.9/6.3***	7.4/6.8***	5.6/4.8*** (5.6)	4.5	5.6/4.8***
– extra-urban	4.5/4.6**	4.4/4.3***	4.6/4.2***	4.8/4.6***	3.7/3.4*** (3.9)	3.4	3.7/3.4***
– combined	5.8/5.9**	5.1/4.9***	5.4/5.0***	5.8/5.4***	4.4/3.9*** (4.5)	3.8	4.4/3.9***
CO ₂ emissions (g/km)	134/137**	119/114***	125/116***	134/125***	114/104*** (118)	99	114/104***
Turning circle diameter (m)	10.9	10.9	10.9	10.9	10.9	10.9	10.9
Power transmission							
Type	Front-wheel drive	Front-wheel drive	Front-wheel drive	Front-wheel drive	Front-wheel drive	Front-wheel drive	Front-wheel drive
Clutch	Hydraulic single dry clutch disc	Hydraulic single dry clutch disc	Hydraulic single dry clutch disc	Twin coaxial clutch, electro-hydraulically operated	Hydraulic single dry clutch disc (Twin coaxial clutch, electro-hydraulically operated)	Hydraulic single dry clutch disc	Hydraulic single dry clutch disc
Transmission	Manual 5-speed	Manual 5-speed	Manual 6-speed	Automatic 7-speed DSG	Manual 5-speed (Automatic 7-speed DSG)	Manual 5-speed	Manual 5-speed
Weight							
Kerb weight							
– in standard version with a 75kg driver (kg)	1,130	1,150	1,170	1,225	1,260 (1,280)	1,258	1,260
Payload – incl. a driver and extra equipment (kg)	535	535	535	535	535	535	535
Total weight (kg)	1,590	1,610	1,630	1,685	1,720 (1,740)	1,718	1,720
Trailer load without brakes (max. kg)	560	570	580	610	630 (640)	–	630
Trailer load with brakes – 12% (max. kg)	750	900	1,100	1,200	1,200	–	1,200

Body	5-seater, 5-door, 2-compartment
Drag coefficient C _w	0.304–0.311 (according to engine version)

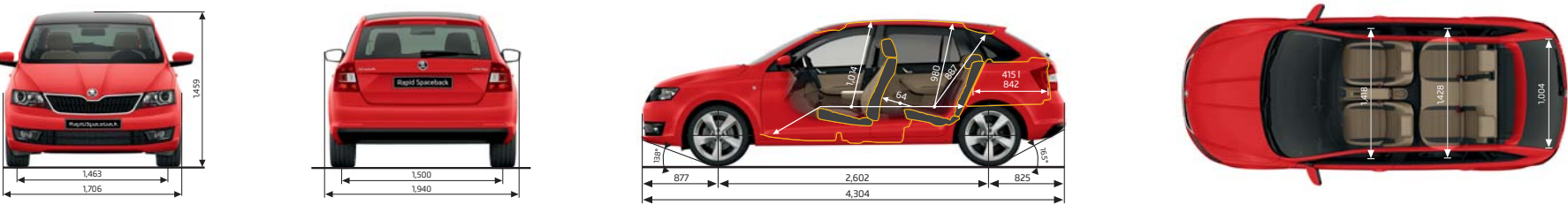
Chassis	
Front axle	McPherson suspension with lower triangular links and torsion stabiliser
Rear axle	Compound link crank-axle
Braking system	Hydraulic dual-diagonal circuit braking system vacuum assisted
– front brakes	Disc brakes with inner cooling and with single-piston floating calliper
– rear brakes	Drum brakes; alternatively disc brakes depending on the engine version
Steering	Direct rack-and-pinion steering with electro-mechanic power steering
Wheels	5.0J x 14"; 6.0J x 15"
Tyres	175/70 R14; 185/60 R15

Tank capacity (l)	55
The listed values (except for values marked **) apply to the standard model without extra equipment.	
* Using low-octane fuel may affect engine performance.	
** At kerb weight with extra equipment exceeding 1,090 kg.	

Exterior dimensions	
Length (mm)	4,304
Width (mm)	1,706
Height (mm)	1,459
Wheel base (mm)	2,602
Track front/rear (mm) – according to engine version	1,463; 1,457/1,500; 1,494
Clearance (mm)	134

Interior dimensions	
Lateral room front/rear (mm)	1,418/1,428
Effective head room front/rear (mm)	1,014/980
Luggage storage space (max. l)	
– without spare tyre, with rear seat backrests upright/down	415/1,380
– with spare tyre the values are lower by 31l	

*** Applies to Green tec version.
– The GreenLine version is not available with a tow bar.



Merchandising



Fitness bag



Baseball cap



Key chain



Notebook



Pocket knife

General information

ŠKODA Service

Put your car in good hands. We give you good reasons to choose an authorised ŠKODA service partner.

We offer you first-class quality

Your car requires advanced technology. All the authorised ŠKODA service partners have special tools and quality diagnostic systems at their disposal to ensure the perfect functionality and reliability of your car.

Professionally trained staff by the manufacturer

The ever-rising standard of the technology used in our cars requires corresponding professional qualifications on the part of the staff. To meet this requirement, the manufacturer organises regular training for the authorised ŠKODA service partners in order to provide them with up-to-date information important for their activities.

Our motto: be fair and open with our customers

Careful, professional and friendly counselling for the customers upon acceptance of orders is just as important to us as diligence and completeness with respect to repairs and maintenance work. All this is continuously monitored by internal quality control.

Comprehensive range of services:

› Service inspections

The authorised ŠKODA service partner guarantees the performance of regular service inspections in accordance with the manufacturer's instructions and ensures the long-term functionality of your car. The service schedule informs you when the service inspection must be done.

› Body and paintwork service

Damage to the body and painted areas will be fixed by your authorised ŠKODA service partner in an expert manner, in accordance with the manufacturer's instructions, using ŠKODA Genuine Parts. This is important not only for your safety, but also for functionality and maintaining your car's value.

› Courtesy car

The authorised ŠKODA service partner can provide you with a courtesy car for the period of repair or service inspection.

› Pick up and delivery service

If you are unable to take your vehicle to the ŠKODA Service, an authorised ŠKODA service partner will arrange a date with you to pick up the car. The car will be delivered back to you after the service work has been completed.

The listed services represent only part of the wide range of ŠKODA Service offers, which may vary from country to country. Please contact your authorised ŠKODA service partner for further details.

ŠKODA Applications

ŠKODA Service App – ŠKODA Service in your pocket

The ŠKODA Service application is designed for smartphones operating on iOS and Android systems and its purpose is to help ŠKODA customers in any difficult situation they may encounter on their travels.

ŠKODA Manual App – know your vehicle

The ŠKODA Manual application is aimed at users of tablet PCs who

are interested in ŠKODA vehicles or already own one. The application contains a full featured digital version of the owner's manual for all current ŠKODA models.

ŠKODA Genuine Accessories

ŠKODA Genuine Accessories offer you a wide assortment oriented to five main product groups (sport and design, music and communication, comfort and utility, transport and safety) and bicycle products. For more detailed information on the complete ŠKODA Genuine Accessories range see the individual ŠKODA model catalogues.

ŠKODA Genuine Parts

Safety

ŠKODA Genuine Parts are identical to those used in the assembly of ŠKODA vehicles. The use of first-class materials and technologies guarantees safe and worry-free motoring.

Availability

ŠKODA AUTO offers a complete range of parts and equipment items used in the vehicle's series production and does not merely focus on high-turnover parts. Our objective is to secure ŠKODA Genuine Parts supplies essential for the operation of the vehicle for a period of 15 years after the end of the model run.

Long service life

The use of first-rate materials and manufacturing technologies applied in the production of ŠKODA Genuine Parts ensure their maximum reliability and long life. As proof, we have extended the genuine batteries warranty to three years.

Environment protection

The ŠKODA Genuine Parts range includes exchange parts, which are manufactured with a low environmental impact in terms of waste, excess heat and water contamination.

Information on the internet

Information is available at www.skoda-auto.com to assist you in deciding which vehicle suits your needs, thanks to the detailed descriptions and photographs of all our models. Visit www.facebook.com/skoda and become a fan of ŠKODA to receive the latest updates and get in touch with our community.

ŠKODA Finance


ŠKODA Finance provided by ŠkoFIN offers solutions for both individuals and businesses. Purchase your car with favorable conditions without additional costs. You can learn about the current credit or lease offer through any authorised ŠKODA partner.

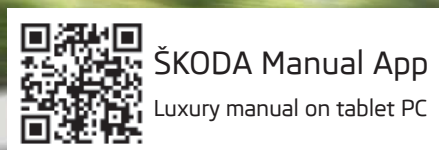
Global fleet

The ŠKODA AUTO Global Fleet Services offer B2B fleet solutions to customers with all kinds of requirements. A fleet made up of ŠKODA cars offers unmatched roominess, long-lasting quality, safety, low total costs of ownership and as a result excellent value for money. You can find more information about our products and services at www.skoda-auto.com/fleet.

One of the most important goals of ŠKODA AUTO is the development and manufacture of products that are as environmentally friendly as possible throughout their life cycle phases, placing principal emphasis on the selection of recyclable materials. Our ŠKODA cars are produced using progressive types of technology in modern production facilities that meet the strictest criteria. Anticorrosive protection of the cars' painted parts is based exclusively on lead-free cathaphoresis (KTL) and water-soluble paints.

Our company strategy includes limiting fuel consumption and emissions. As a result, the engines we offer meet the current emission regulations. All ŠKODA products are made using manufacturing processes that adhere to the laws and regulations concerning the protection of soil and water. As a result of these activities, ŠKODA cars meet technical, safety, quality and environmental requirements. ŠKODA AUTO contributes to the preservation of a clean environment and provides mobility and comfort to its customers.

The environmental logo expresses ŠKODA AUTO's awareness of, responsibility for and attempts at the sustainable development of the company and a friendly approach to life and nature. 



Some models in this catalogue are shown fitted with optional or extra equipment not necessarily included in the standard equipment. All details of technical specifications, design, equipment, materials, guarantees and appearance were accurate at the time of going to print. However, the manufacturer reserves the right to make any changes without prior notice. The information included in this catalogue is for guidance only. Due to printing technology limitations, the colours of paints or other materials shown in this catalogue may differ from reality. For up-to-date information and further details on standard and optional equipment, current prices and delivery terms and conditions contact your authorised ŠKODA partner. This catalogue was printed on cellulose paper which was bleached without using chlorine. The paper is 100% recyclable.