

The new Passat and Passat Estate

Volkswagen. Das Auto.
Internet: www.volkswagen.ie
© Volkswagen Group Ireland Limited 2014.
At your Volkswagen dealer:

All rights reserved. November 2014.



facebook.com/vwireland



[@VolkswagenIE](https://twitter.com/VolkswagenIE)



youtube.com/VolkswagenIreland



Das Auto.

The new Passat and Passat Estate





Models shown are new Passat Estate Highline and new Passat Highline with optional 19" 'Verona' alloy wheels, 'Premium' LED headlights and 'Tungsten Silver' metallic paint.

The new Passat. Streets ahead.

New design, new technologies, new engines. Everything about the new Passat is advanced. Sharp new styling, a longer wheelbase, shorter body overhangs and a dynamic silhouette with distinctive tornado line all adding elegance and refinement. Inside, the redesigned interior complements the sophisticated exterior, with new equipment and new features creating unprecedented levels of comfort and convenience. Innovative and intelligent, the new Passat is quite simply as versatile and progressive as you could wish for.

Business smart.

The new Passat Saloon and Passat Estate make their debut as the eighth generation of the best-seller that has sold nearly 22 million models since 1973. Now, thanks to the advanced technologies and sophisticated assistance systems of the all-new Passat models, you can look forward to even greater levels of comfort, luxury and performance.

And that's not all. With its innovative lightweight design, the new Passat is up to 85kg lighter than the outgoing model, combined with sustainable engine technology reducing CO₂ emissions to new low levels – operating and fuel costs are lower than ever, benefiting both the environment and your pocket.



Model shown is new Passat Highline with optional 'Premium' LED headlights, 'Area View' and 'Tungsten Silver' metallic paint.



Model shown is new Passat Highline with optional 19" 'Verona' alloy wheels, 'Premium' LED headlights and 'Tungsten Silver' metallic paint.



Discover the smart way to drive.

When it comes to on-board help, the new Passat and Passat Estate excel, with a number of driving assistants available to help share the workload. Depending on your requirements, driver's assistance systems can help with parking, overtaking and motorway driving. Smart, intelligent and capable, the new Passat is made for sophisticated drivers who delight in innovative technology.



Interior shown is new Passat Highline with optional 'Discover Pro' touch-screen navigation/DVD radio system and 'Night Blue' metallic paint.



The all-singing, all-dancing new Passat.

Everything about the new Passat and Passat Estate has been designed to make your journey as enjoyable and pleasant as possible: from the high quality materials and ergonomically designed controls to the sophisticated multimedia technology. Take for example the Highline model: Ambient lighting, ergoActive driver's seat, heated front seats in Alcantara and 'Vienna' leather and Climate control – 3-Zone climatronic air conditioning with automatic air recirculation enhance your driving experience, while the optional 'Discover Pro' touch-screen navigation/DVD radio system will guide you safely to your chosen destination.



Interior shown is new Passat Estate Highline with optional net partition and 'Night Blue' metallic paint.

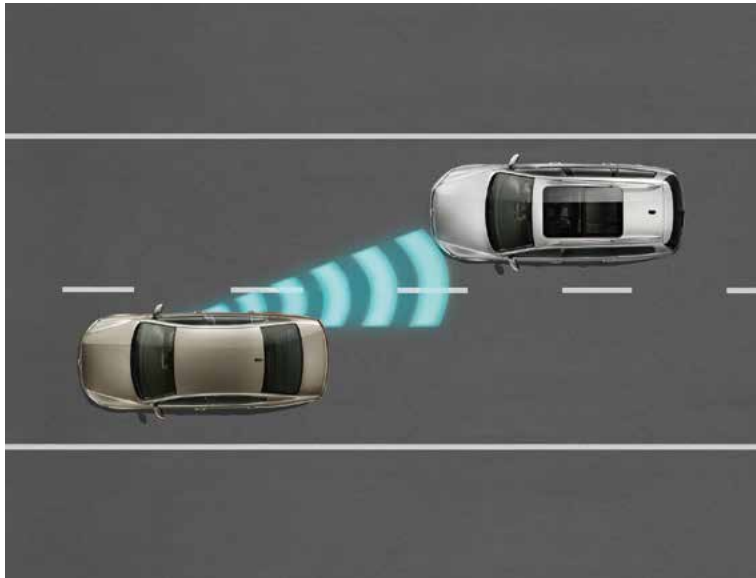
It's easy to relax in the new Passat.

The finest quality upholsteries and leathers adorn the new Passat's seats; stylish, durable and ergonomically designed to provide both comfort and support however long your journey may be. The standard front seats provide the driver and front seat passenger with both manual height and lumbar adjustment, while Comfortline models and above feature the new ergoActive front seat for the driver. Thanks to lumbar support, seat cushion tilt adjustment, thigh support and electric backrest adjustment, this amazing new comfort seat enables you to find the optimum position for your spine easily and quickly. Combined with the spacious new interior providing more leg and head room than ever before, there's plenty of room for family, friends and equipment, whether you're heading for the office, collecting the kids or taking off for the weekend.

The latest on-board assistants to help keep you safe.



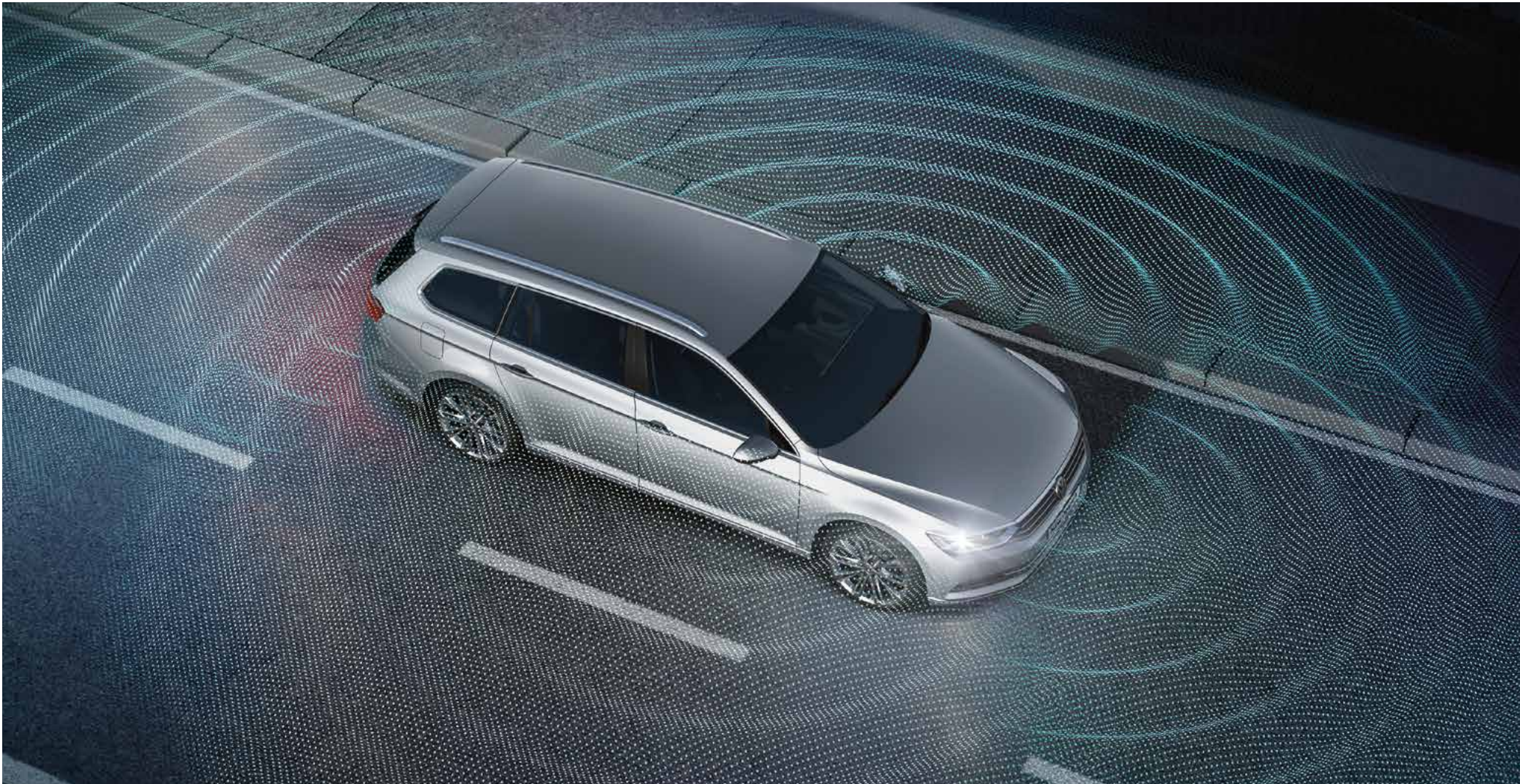
Trailer Assist



Side Assist 'Plus'

Side Assist 'Plus', as part of the optional Driver's Assistance Pack, makes motorway driving safer by helping to prevent accidents when you want to change lanes. The radar system monitors the areas to the left and right of the car and up to 50 metres behind it, and should it detect a potentially hazardous situation, it warns you by means of flashing warning lights in the door mirror housing. Optional on Comfortline and Highline models.

Trailer Assist including Park Distance Control (PDC) and 'Park Assist'. Anyone who has tried to manoeuvre a vehicle with a trailer attached understands how complicated this can be. The world's first Trailer Assist helps you reverse with a trailer attached, easily, accurately and safely. The rear-view camera visualises actual and possible steering angles of the trailer in relation to the vehicle which are displayed in the instrument cluster. Reverse steering is automatic, with direction controlled via the mirror adjustment switch which acts as a joystick, while the driver controls the accelerator and brake and keeps a good look out. Optional on Comfortline and Highline models. Only in combination with the optional swivelling trailer hitch (1M6).



Area View

Area View including rear-view camera 'Rear Assist'. Four cameras located in the boot lid, door mirrors and radiator grille, each with an aperture angle of over 180 degrees, provides a 360-degree view around the new Passat helping you manoeuvre safely in any direction. From the display menu, the driver can select the camera views; front, rear, side or bird's-eye view, on either full or split-screen, displayed on the new Passat's infotainment system. Optional on Comfortline and Highline models.

Your own personal concert hall.



Radio 'Composition Colour' system

The **radio 'Composition Colour' system** is equipped with a 5 inch colour touch-screen, CD player and SD card reader. It also features title and compatible cover art display and facilitates music playback from MP3, WMA and AAC files through eight speakers front and rear with 4 x 20 watt output. Car information display provides journey analysis and driver tips for more fuel efficient driving. Standard on Trendline models.



Radio 'Composition Media' system

The **radio 'Composition Media' system** is equipped with a 6.5 inch colour touch-screen with proximity sensor that recognises in advance your intention to touch the screen and automatically adjusts the display mode. Features also include CD player, SD card reader, eight speakers, diversity antenna for AM/FM reception, USB interface, AUX-in socket and Bluetooth telephone connection. Standard on Comfortline and Highline models.

Please note that due to the nature of mobile phone technology, not all phones will be compatible with Volkswagen systems. Please check with your Volkswagen dealer for details on compatibility.

All the functions of navigation 'Discover Media' are included in the **'Discover Pro' touch-screen navigation/DVD radio system with integrated voice activation** which can be operated intuitively via the 8.0 inch TFT colour touch-screen, enabling you to manage music and navigation data. Eight powerful speakers deliver exceptional power and the DVD system is compatible with MP3 and WMA files. It also offers a 30 GB SSD hard drive, SD card reader, photo display from JPEG and PNG files and a USB connection. Optional on Comfortline and Highline models.

Please note: Model shown opposite is Highline with heated front seats.



'Discover Media' touch-screen navigation/radio system with optional integrated voice activation

The **'Discover Media' touch-screen navigation/radio system** builds upon the impressive radio 'Composition Media' system, but with additional features enabling you to easily manage not only your music, but also navigation data, and a broad range of vehicle information. The system also features a Mobile Device Interface AUX-in and offers preloaded European navigation data, 2D/3D map view, three calculated route choices (Fast, Short and Eco) and branded points of interest. It is also equipped with a proximity sensor that recognises in advance your intention to touch the screen and automatically adjusts the display mode. Optional on all models.

Please note: Image shown features optional voice control for Comfortline and Highline models.



'Discover Pro' touch-screen navigation/DVD radio system

Alloy wheels.



‘Verona’* 8J x 19" alloy wheels with 235/40 R19 tyres. Optional on Highline models.



‘Aragon’ 6½J x 16" alloy wheels with 215/60 R16 tyres. Optional on Trendline models.



‘Sepang’ 6½J x 16" alloy wheels 215/60 R16 tyres. Standard on Comfortline models.



‘London’ 7J x 17" alloy wheels with 215/55 R17 tyres. Standard on Highline models.



‘Soho’ 7J x 17" alloy wheels with 215/55 R17 tyres. Optional on Comfortline and Highline models.



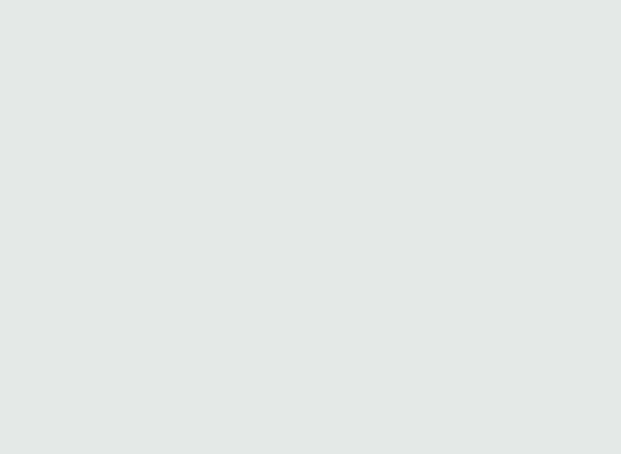
‘Dartford’* 8J x 18" alloy wheels with 235/45 R18 tyres. Optional on Highline models.



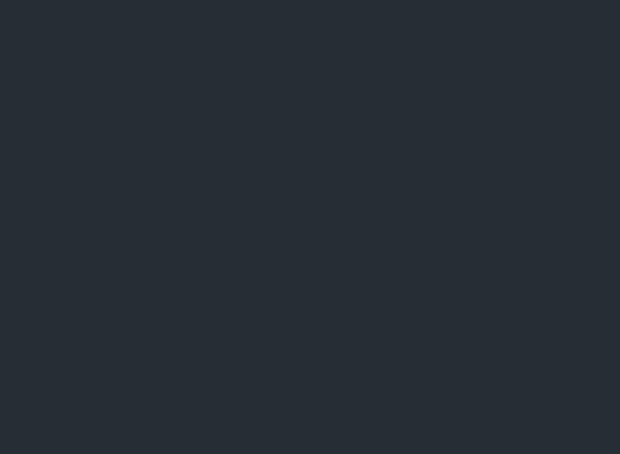
‘Monterrey’* 8J x 18" alloy wheels with 235/45 R18 tyres. Optional on Comfortline ¹ and Highline ² models.

* Choosing optional 18" and 19" alloy wheels may result in increased fuel consumption as well as higher CO₂ emissions. See Technical specification on pages 26–29 for full information.
1 18" Monterrey alloy wheels are optional on Comfortline as part of the R-Line styling pack option (WO8).
2 18" Monterrey alloy wheels are optional on Highline as part of the R-Line styling pack option (WO7).

Paints.



Pure White Non-Metallic **0Q0Q**



Urano Grey Non-Metallic **5K5K**



Harvard Blue Metallic* **4P4P**



Sand Gold Metallic* **4T4T**



Reflex Silver Metallic* **8E8E**



Tungsten Silver Metallic* **K5K5**



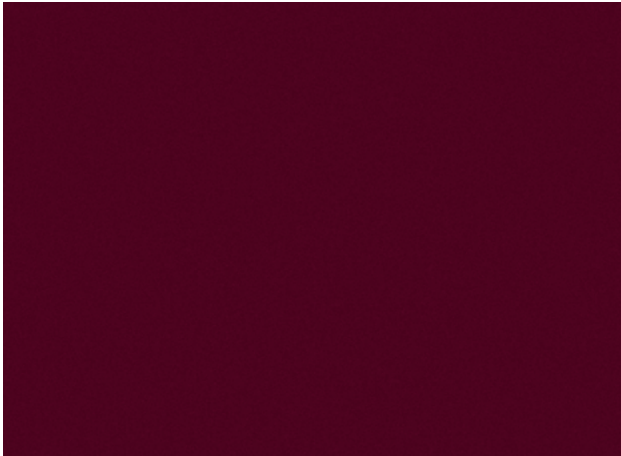
Black Oak Brown Metallic* **P0P0**



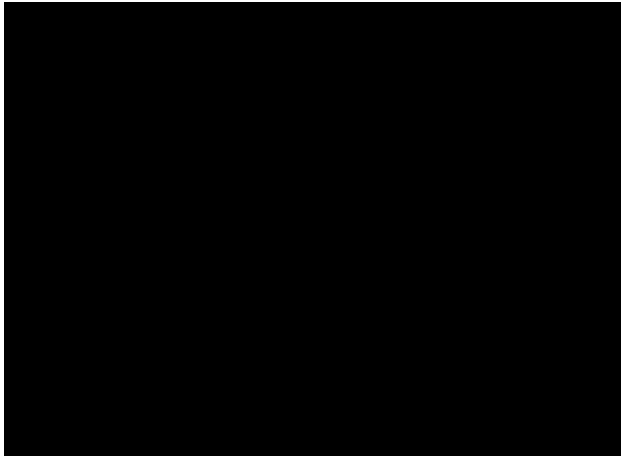
Indium Grey Metallic* **X3X3**



Night Blue Metallic* **Z2Z2**



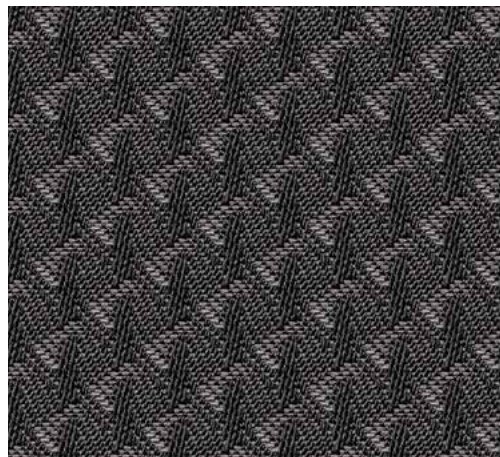
Crimson Red Premium Metallic† **5P5P**



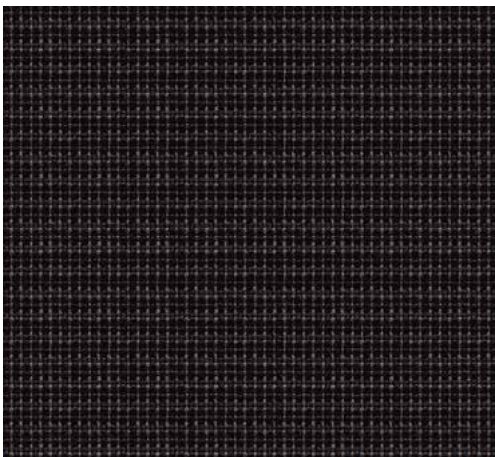
Deep Black Pearl Effect* **2T2T**

Please note: the print processes do not allow exact reproduction of the paint colours. * Optional at extra cost. † Crimson Red Metallic is a special paint finish and is therefore priced differently to other metallic paints.

Upholstery.



‘Lizard’ Cloth Anthracite/Titan Black TO
Standard on Trendline models



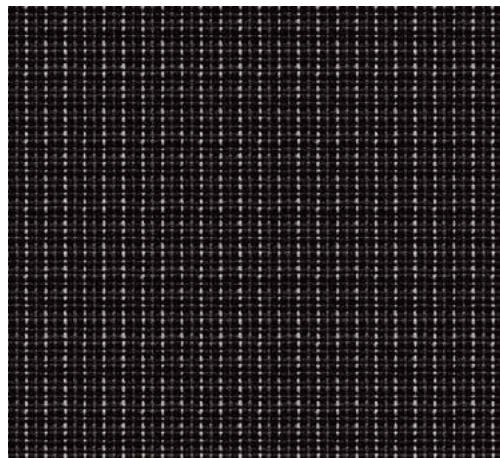
‘Weave’ Cloth Nature Brown TQ
Standard on Comfortline models



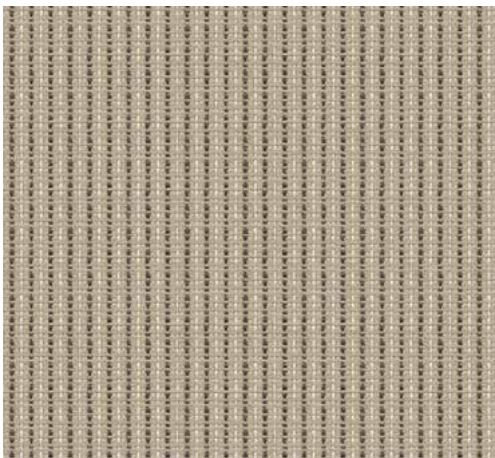
Alcantara/‘Vienna’ Leather* Titan Black TO
Standard on Highline models



Alcantara/‘Vienna’ Leather* St. Tropez TS
Standard on Highline models



‘Weave’ Cloth Titan Black TO
Standard on Comfortline models



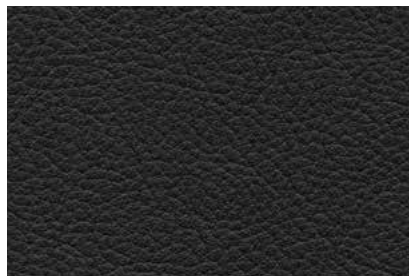
‘Weave’ Cloth St. Tropez TS
Standard on Comfortline models



Alcantara/‘Vienna’ Leather* Nature Brown TQ
Standard on Highline models



Alcantara/‘Vienna’ Leather* Moonrock/Black TT
Standard on Highline models



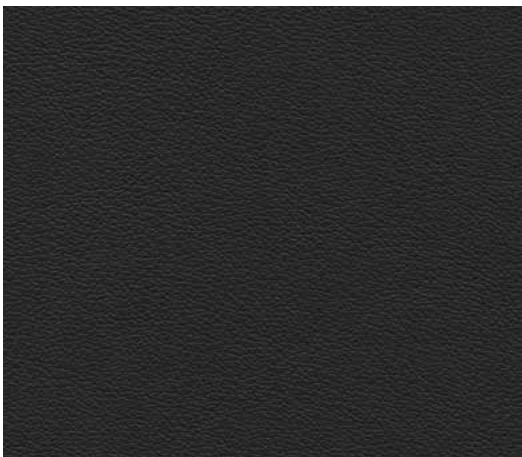
‘Vienna’ Leather* Black/Titan Black TO
Optional on Comfortline models



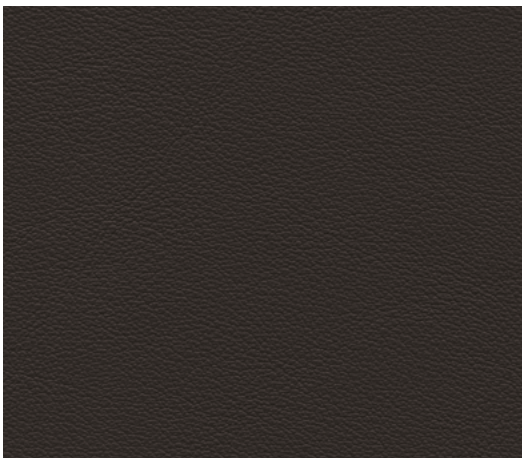
‘Vienna’ Leather* Nature Brown TQ
Optional on Comfortline models



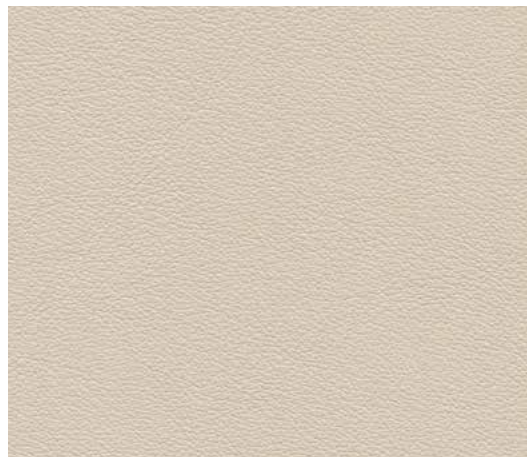
‘Vienna’ Leather* St. Tropez TS
Optional on Comfortline models



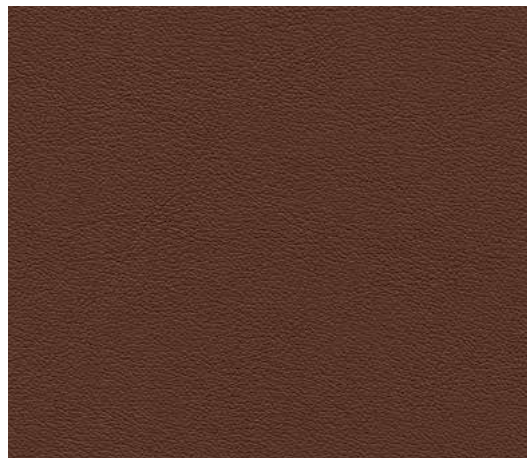
‘Nappa’ Leather* Titan Black TO
Optional on Highline models



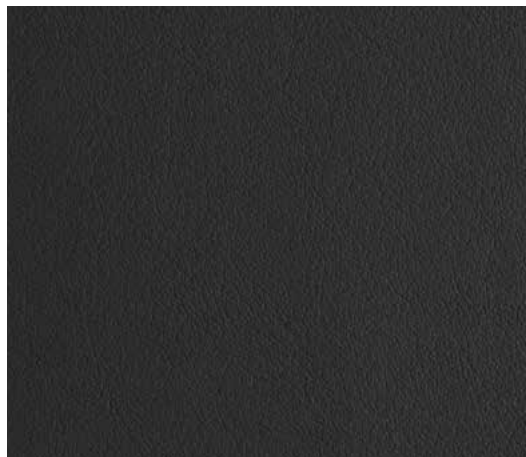
‘Nappa’ Leather* Nature Brown TQ
Optional on Highline models



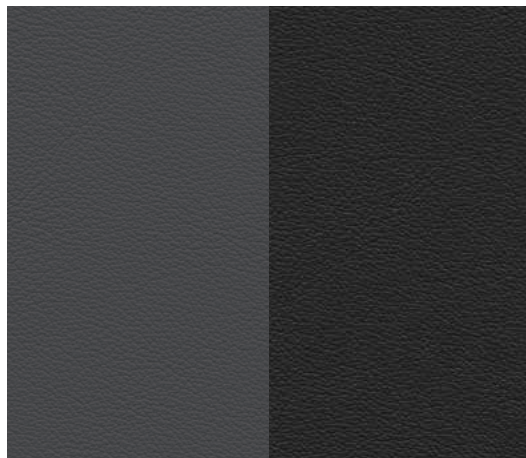
‘Nappa’ Leather* St. Tropez TS
Optional on Highline models



‘Nappa’ Leather* Marrakesch LW
Optional on Highline models



‘Nappa’ Leather* Black/Titan Black OH
Optional on Highline models ¹



‘Nappa’ Leather* Flint Grey/Titanium Black OK
Optional on Highline models ¹

Please note: the print processes do not allow exact reproduction of the upholstery colours. * Some parts of leather interior will contain artificial leather. † Optional at extra cost.

¹ Optional on Highline as part of the R-Line styling pack option (WO9).



Combinations.				Pure White Non-Metallic* 0Q0Q	Urano Grey Non-Metallic 5K5K	Harvard Blue Metallic* 4P4P	Sand Gold Metallic* 4T4T	Reflex Silver Metallic* 8E8E	Tungsten Silver Metallic* K5K5	Dark Oak Brown Metallic* P0P0	Indium Grey Metallic* X3X3	Night Blue Metallic* ZZZZ	Crimson Red Premium Metallic* 5P5P	Deep Black Pearl Effect* 2T2T
Seat upholstery	Dashboard	Carpet	Headliner											
‘Lizard’ cloth Standard on Trendline Anthracite/Titan Black (TO)	Titan Black	Titan Black	St. Tropez	●	●	●	●	●	●	●	●	●	●	●
	Titan Black	Titan Black	St. Tropez	●	●	●	●	●	●	●	●	●	●	●
	Nature Brown (TQ)	Nature Brown	St. Tropez	●	●	●	●	●	●	●	●	●	–	●
	St. Tropez (TS)	Titan Black	St. Tropez	●	●	●	●	●	●	●	●	●	●	●
Alcantara seat centre section and ‘Vienna’ leather† side bolsters Standard on Highline Titan Black (TO)	Titan Black	Titan Black	St. Tropez	●	●	●	●	●	●	●	●	●	●	●
	Nature Brown (TQ)	Nature Brown	St. Tropez	●	●	●	●	●	●	●	●	●	–	●
	St. Tropez (TS)	Titan Black	St. Tropez	●	●	●	●	●	●	●	●	●	●	●
	Moonrock/Black (TT)	Titan Black	St. Tropez	●	●	●	–	●	●	●	●	●	●	●
‘Vienna’ leather* † including front top comfort seats Optional on Comfortline Black/Titan Black (TO)	Titan Black	Titan Black	St. Tropez	○	○	○	○	○	○	○	○	○	○	○
	Nature Brown (TQ)	Nature Brown	St. Tropez	○	○	○	○	○	○	○	○	○	–	○
	St. Tropez (TS)	Titan Black	St. Tropez	○	○	○	○	○	○	○	○	○	○	○
‘Nappa’ leather* † including front top comfort seats Optional on Highline Titan Black (TO)	Titan Black	Titan Black	St. Tropez	○	○	○	○	○	○	○	○	○	○	○
	Nature Brown (TQ)	Nature Brown	St. Tropez	○	○	○	○	○	○	○	○	○	–	○
	St. Tropez (TS)	Titan Black	St. Tropez	○	○	○	○	○	○	○	○	○	○	○
	Marrakesch (LW)	Black	St. Tropez	○	○	○	○	○	○	○	○	○	–	○
‘Nappa’ leather* † Optional on Highline as part of the R-Line styling pack option (WO9) Titan Black (OH)	Black	Black	Black	○	○	○	○	○	○	○	○	○	○	○
	Flint Grey/Titanium Black (OK)	Black	Black	○	○	○	○	○	○	○	○	○	○	○

● Standard. ○ Optional at extra cost. – Not available.

* Metallic, premium metallic and pearl effect paints and leather upholstery are optional at extra cost. † Some parts of leather interior will contain artificial leather.



Model shown is new Passat Highline with optional 19" 'Verona' alloy wheels, 'Premium' LED headlights, 'Area View' and 'Tungsten Silver' metallic paint.

Technical specification – Passat Saloon.

	Trendline, Comfortline 1.4 ltr TSI 125 bhp BlueMotion Technology	Highline 1.4 ltr TSI ACT 150 bhp BlueMotion Technology	Trendline, Comfortline, Highline 1.6 ltr TDI 120 bhp BlueMotion Technology	Comfortline, Highline 2.0 ltr TDI 150 bhp BlueMotion Technology	Highline 2.0 ltr TDI 190 bhp BlueMotion Technology
Engine					
Engine type	4 cylinder petrol	4 cylinder petrol	4 cylinder diesel	4 cylinder diesel	4 cylinder diesel
Cubic capacity, ltrs/cc	1.4/1395	1.4/1395	1.6/1598	2.0/1968	2.0/1968
Max. output, bhp/kW	125/92	150/110	120/88	150/110	190/140
at rpm	5000-6000	5000-6000	3600-4000	3500-4000	3500-4000
Max. torque, lbs.ft/Nm	148/200	184/250	184/250	251/340	295/400
at rpm	1400-4000	1500-3000	1750-3500	1750-3000	1750-3000
Gearbox	6-spd manual 7-spd auto DSG	6-spd manual 7-spd auto DSG	6-spd manual 7-spd auto DSG	6-spd manual 6-spd auto DSG	6-spd manual 6-spd auto DSG
Weights, kgs					
Manual gearbox:					
Unladen weight ⁽⁰¹⁾	1367	1387	1444	1475	TBC
Gross vehicle weight	1910	1940	1990	2020	TBC
Payload ⁽⁰¹⁾	618	628	621	620	TBC
Axle load limit: Front	960	980	1060	1070	TBC
Rear	1000	1010	980	1000	TBC
Automatic DSG gearbox:					
Unladen weight ⁽⁰¹⁾	TBC	TBC	1459	1501	1549
Gross vehicle weight	TBC	TBC	2000	2040	2110
Payload ⁽⁰¹⁾	TBC	TBC	616	614	636
Axle load limit: Front	TBC	TBC	1070	1090	1100
Rear	TBC	TBC	980	1000	1060
Trailer load limits, kgs ⁽⁰²⁾					
Braked 12% incline:					
Manual gearbox	1500	1600	1500	2000	TBC
Automatic DSG gearbox	TBC	TBC	1500	2000	2000
Unbraked:					
Manual gearbox	680	690	720	750	TBC
Automatic DSG gearbox	TBC	TBC	720	750	750
Max. roof load	100	100	100	100	100

	Trendline, Comfortline 1.4 ltr TSI 125 bhp BlueMotion Technology	Highline 1.4 ltr TSI ACT 150 bhp BlueMotion Technology	Trendline, Comfortline, Highline 1.6 ltr TDI 120 bhp BlueMotion Technology	Comfortline, Highline 2.0 ltr TDI 150 bhp BlueMotion Technology	Highline 2.0 ltr TDI 190 bhp BlueMotion Technology
Performance					
Top speed, km/h, where the law permits					
Manual gearbox	208	220	206	220	TBC
Automatic DSG gearbox	TBC	TBC	206	218	235
Acceleration, secs 0 – 100km/h					
Manual gearbox	9.7	8.4	10.8	8.7	TBC
Automatic DSG gearbox	TBC	TBC	10.8	8.7	7.7
Environmental information					
Fuel grade, minimum	Unleaded, 95 RON	Unleaded, 95 RON	Diesel ⁽⁰³⁾	Diesel ⁽⁰³⁾	Diesel ⁽⁰³⁾
Fuel tank capacity, ltrs ⁽⁰⁴⁾	66	66	66	66	66
Official fuel consumption					
manual gearbox, mpg/ltr per 100km ⁽⁰⁵⁾					
Urban	41.5/6.8	47.1-46.3 [†] /6.0-6.1 [†]	60.1-57.7 [†] /4.7-4.9 [†]	60.1-58.9 [†] /4.7-4.8 [†]	TBC
Extra-urban	64.2/4.4	65.7-64.2 [†] /4.3-4.4 [†]	78.5-74.3 [†] /3.6-3.8 [†]	78.5-74.3 [†] /3.6-3.8 [†]	TBC
Combined	53.3/5.3	57.7-56.5 [†] /4.9-5.0 [†]	70.6-67.3 [†] /4.0-4.2 [†]	70.6-68.9 [†] /4.0-4.1 [†]	TBC
Official fuel consumption					
automatic DSG gearbox, mpg/ltr per 100km ⁽⁰⁵⁾					
Urban	TBC	TBC	62.8-61.4 [†] /4.5-4.6 [†]	54.3-53.3 [†] /5.2-5.3 [†]	52.4/5.4
Extra-urban	TBC	TBC	76.4-72.4 [†] /3.7-3.9 [†]	70.6-68.9 [†] /4.0-4.1 [†]	70.6-68.9 [†] /4.0-4.1 [†]
Combined	TBC	TBC	70.6-68.9 [†] /4.0-4.1 [†]	64.2-62.8 [†] /4.4-4.5 [†]	62.8-61.4 [†] /4.5-4.6 [†]
Official CO ₂ emission, g/km					
Manual gearbox ⁽⁰⁶⁾	123	115-116	105-109	108	TBC
Automatic DSG gearbox ⁽⁰⁶⁾	TBC	TBC	103-106	118	118-119
Emission class	EURO 6	EURO 6	EURO 6	EURO 6	EURO 6

Final technical figures to be confirmed prior to start of production in week 9, 2015.
† Fuel consumption mpg/ltr per 100km with optional 18" and 19" alloy wheels.

Technical specification – Passat Estate.

	Trendline, Comfortline 1.4 ltr TSI 125 bhp BlueMotion Technology	Highline 1.4 ltr TSI ACT 150 bhp BlueMotion Technology	Trendline, Comfortline, Highline 1.6 ltr TDI 120 bhp BlueMotion Technology	Comfortline, Highline 2.0 ltr TDI 150 bhp BlueMotion Technology	Highline 2.0 ltr TDI 190 bhp BlueMotion Technology
Engine					
Engine type	4 cylinder petrol	4 cylinder petrol	4 cylinder diesel	4 cylinder diesel	4 cylinder diesel
Cubic capacity, ltrs/cc	1.4/1395	1.4/1395	1.6/1598	2.0/1968	2.0/1968
Max. output, bhp/kW	125/92	150/110	120/88	150/110	190/140
at rpm	5000-6000	5000-6000	3600-4000	3500-4000	3500-4000
Max. torque, lbs.ft/Nm	148/200	184/250	184/250	251/340	295/400
at rpm	1400-4000	1500-3000	1750-3500	1750-3000	1750-3000
Gearbox	6-spd manual 7-spd auto DSG	6-spd manual 7-spd auto DSG	6-spd manual 7-spd auto DSG	6-spd manual 6-spd auto DSG	6-spd manual 6-spd auto DSG
Weights, kgs					
Manual gearbox:					
Unladen weight ⁽⁰¹⁾	1394	1429	1485	1505	TBC
Gross vehicle weight	1960	2000	2060	2070	TBC
Payload ⁽⁰¹⁾	641	646	650	640	TBC
Axle load limit: Front	950	980	1040	1050	TBC
Rear	1060	1070	1070	1070	TBC
Automatic DSG gearbox:					
Unladen weight ⁽⁰¹⁾	TBC	TBC	1500	1541	1581
Gross vehicle weight	TBC	TBC	2060	2130	2170
Payload ⁽⁰¹⁾	TBC	TBC	635	664	664
Axle load limit: Front	TBC	TBC	1050	1100	1100
Rear	TBC	TBC	1060	1080	1120
Trailer load limits, kgs ⁽⁰²⁾					
Braked 12% incline:					
Manual gearbox	1500	1600	1500	2000	TBC
Automatic DSG gearbox	TBC	TBC	1500	2000	2000
Unbraked:					
Manual gearbox	690	710	740	2000	TBC
Automatic DSG gearbox	TBC	TBC	750	2100	750
Max. roof load	100	100	100	100	100

	Trendline, Comfortline 1.4 ltr TSI 125 bhp BlueMotion Technology	Highline 1.4 ltr TSI ACT 150 bhp BlueMotion Technology	Trendline, Comfortline, Highline 1.6 ltr TDI 120 bhp BlueMotion Technology	Comfortline, Highline 2.0 ltr TDI 150 bhp BlueMotion Technology	Highline 2.0 ltr TDI 190 bhp BlueMotion Technology
Performance					
Top speed, km/h, where the law permits					
Manual gearbox	206	218	204	218	TBC
Automatic DSG gearbox	TBC	TBC	204	216	233
Acceleration, secs 0 – 100km/h					
Manual gearbox	9.9	8.6	11	8.9	TBC
Automatic DSG gearbox	TBC	TBC	11	8.9	7.9
Environmental information					
Fuel grade, minimum	Unleaded, 95 RON	Unleaded, 95 RON	Diesel ⁽⁰³⁾	Diesel ⁽⁰³⁾	Diesel ⁽⁰³⁾
Fuel tank capacity, ltrs ⁽⁰⁴⁾	66	66	66	66	66
Official fuel consumption					
manual gearbox, mpg/ltr per 100km ⁽⁰⁵⁾					
Urban	41.5/6.8	45.6-44.8 [†] /6.2-6.3 [†]	60.1-57.7 [†] /4.7-4.9 [†]	58.9-57.7 [†] /4.8-4.9 [†]	TBC
Extra-urban	64.2/4.4	62.8-61.4 [†] /4.5-4.6 [†]	76.4-74.3 [†] /3.7-3.8 [†]	76.4-74.3 [†] /3.7-3.8 [†]	TBC
Combined	53.3/5.3	55.4-54.3 [†] /5.1-5.2 [†]	68.9-67.3 [†] /4.1-4.2 [†]	68.9-67.3 [†] /4.1-4.2 [†]	TBC
Official fuel consumption					
automatic DSG gearbox, mpg/ltr per 100km ⁽⁰⁵⁾					
Urban	TBC	TBC	62.8-61.4 [†] /4.5-4.6 [†]	53.3-51.4 [†] /5.3-5.5 [†]	52.4/5.4
Extra-urban	TBC	TBC	76.4-72.4 [†] /3.7-3.9 [†]	68.9-65.7 [†] /4.1-4.3 [†]	68.9/4.1
Combined	TBC	TBC	68.9-67.3 [†] /4.1-4.2 [†]	62.8-60.1 [†] /4.5-4.7 [†]	61.4/4.6
Official CO ₂ emission, g/km					
Manual gearbox ⁽⁰⁶⁾	124	119-120	107-110	107-110	TBC
Automatic DSG gearbox ⁽⁰⁶⁾	TBC	TBC	104-107	119-122	119-120
Emission class	EURO 6	EURO 6	EURO 6	EURO 6	EURO 6

Final technical figures to be confirmed prior to start of production in week 9, 2015.
† Fuel consumption mpg/ltr per 100km with optional 18" and 19" alloy wheels.

Technology.

Technical specification notes

- 01) Figures are calculated in accordance with manufacturer’s criteria. The individual unladen weight depends on the specification of the vehicle, this then reduces the possible payload accordingly. The unladen weight and payload both include the fuel tank 90% full, driver (68kg) and luggage (7kg) in line with EU directive 95/48.
- 02) With increasing altitude the engine performance diminishes. From 1,000m above sea level and for every 1,000m thereafter 10% of the vehicle/trailer weight (trailer weight + gross vehicle weight) must be deducted.
- 03) The use of 100% RME and FAME (bio diesel) is not possible. Forecourt diesel with up to 7% bio diesel content, adhering to standard BS EN 590, can be used in diesel engines. The use of ethanol in forecourt petrol meeting BS EN 228 is allowable.
- 04) The size of the fuel tank is approximate and therefore it may be possible to add a greater amount of fuel than the size of the tank specified, due to the space in the filler neck.
- 05) Official fuel consumption according to EU Directive 99/94. The consumption calculation according to 1999/100/EC is based on the actual unladen weight of the vehicle. Additional specifications can lead to a higher weight class and hence to consumption figures of this higher weight class. The driving style, road and traffic conditions, environmental influences and vehicle condition can in practice lead to consumption figures, which may differ from those calculated with this standard.
- 06) The weight of a vehicle will influence the level of CO₂ emission it produces; as a result, vehicles with higher levels of specification and factory-fitted options may emit higher levels of CO₂. Please note: choosing 18" and 19" alloy wheels as an option may result in increased fuel consumption as well as higher CO₂ emissions.

Transmission

- Electronic differential lock, combined with a hydraulically operated single-plate dry clutch with asbestos-free lining via a six manual or six and seven speed automatic DSG gearbox
- Front wheel drive through asbestos-free single-plate dry clutch. Hydraulic clutch-mechanism. Six speed manual, six or seven speed automatic DSG gearbox with double joint half axles (wet clutch on six speed DSG models)

Running gear

- ESC (Electronic Stability Control) including EDL (Electronic Differential Lock), ASR (Traction Control), EDTC (Engine Drag Torque Control) and Countersteer Support with trailer stabilisation function
- Front suspension through coil springs with telescopic shock absorbers, all elements integrated in chassis legs
- Rear suspension with gas pressure shock absorbers and separate springs
- Multilink rear axle
- Wheel control: front through chassis legs and (lower) triangular wishbones (directionally stabilising steering roll radius)
- Wheel control: rear through four-link suspension with independent wheel suspension
- Front and rear anti-roll bar
- XDS electronic differential lock

Steering

- Electro-mechanical steering rack
- Collapsible, height and lengthways adjustable safety steering column

Brakes

- Electronically controlled Anti-lock Braking System (ABS) with Electronic Brake-pressure Distribution (EBD)
- Diagonal twin-circuit brake system with ventilated front disc brakes and rear disc brakes
- Asbestos-free brake pad
- HBA (Hydraulic Brake Assist)

Engines

- Front transverse-installed engine
- 1.4 litre/125 bhp (92 kW) petrol engine: EU6 emissions standard, four cylinder in-line direct injection turbocharged engine, with four valves per cylinder. Fitted with a turbocharger. Available with a six speed manual or a seven speed automatic DSG transmission
- 1.4 litre/150 bhp (110 kW) petrol engine: Available with a six speed manual or a seven speed automatic DSG transmission
- 1.6 litre/120 bhp (88 kW) common rail diesel engine: EU6 emissions standard, four cylinder in-line common rail diesel engine, with four valves per cylinder. Fitted with a turbocharger and a DPF (diesel particulate filter). Available with a six speed manual or a seven speed automatic DSG transmission
- 2.0 litre/150 bhp (110 kW) common rail diesel engine: EU6 emissions standard, four cylinder in-line common rail diesel engine, with four valves per cylinder. Fitted with a turbocharger and a DPF (diesel particulate filter). Available with a six speed manual or a six speed automatic DSG transmission
- 2.0 litre/190 bhp (140 kW) common rail diesel engine: EU6 emissions standard, four cylinder in-line common rail diesel engine, with four valves per cylinder. Fitted with a turbocharger and a DPF (diesel particulate filter). Available with a six speed manual or a six speed automatic DSG transmission



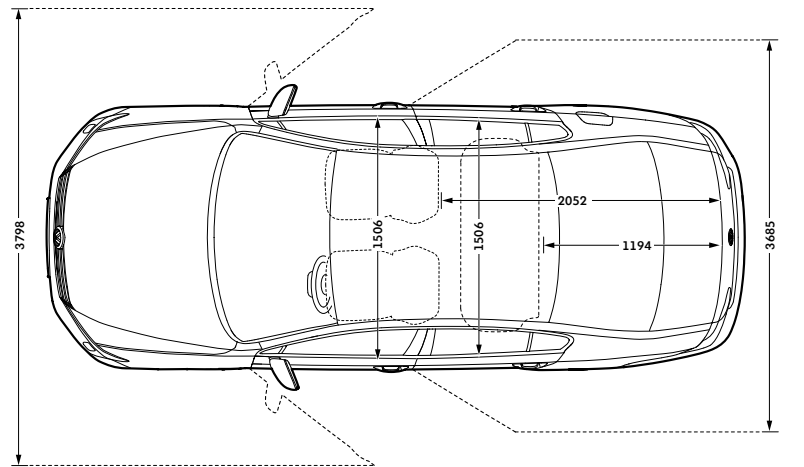
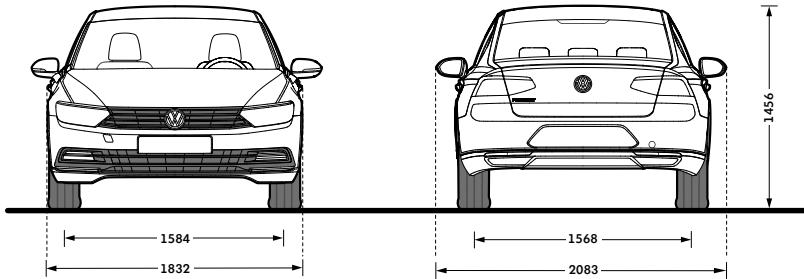
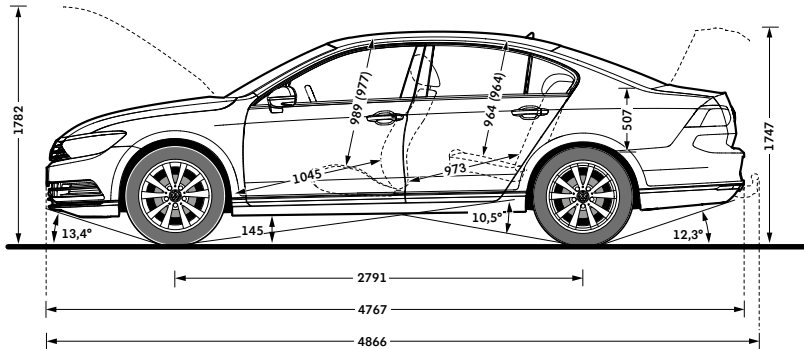
Dimensions.

Exterior dimensions	New Passat Saloon
Length, mm	4767
Width – including door mirrors, mm	2083
Width – opened front/rear doors, mm	3798/3685
Height – mm	1456
Height – opened bonnet/floor, mm	1782
Height – opened tailgate/floor, mm	1747
Wheelbase, mm	2791
Turning circle, mm	11700

Interior dimensions	
Effective headroom – front, mm (with sunroof)	989 (977)
Effective headroom – rear, mm (with sunroof)	964 (964)
Elbow width, front, mm	1506
Elbow width, rear, mm	1506
Legroom front, mm	1045
Legroom rear, mm	973

Maximum luggage capacity, litres VDA measuring method using 200 x 100 x 50mm blocks	
With rear seats upright	586
With rear seats folded	1152

On illustrations, where arrows and figures are shown inside of the vehicle, the measurements are for interior dimensions. Where arrows and figures are shown outside of the vehicle, the measurements are for exterior dimensions.

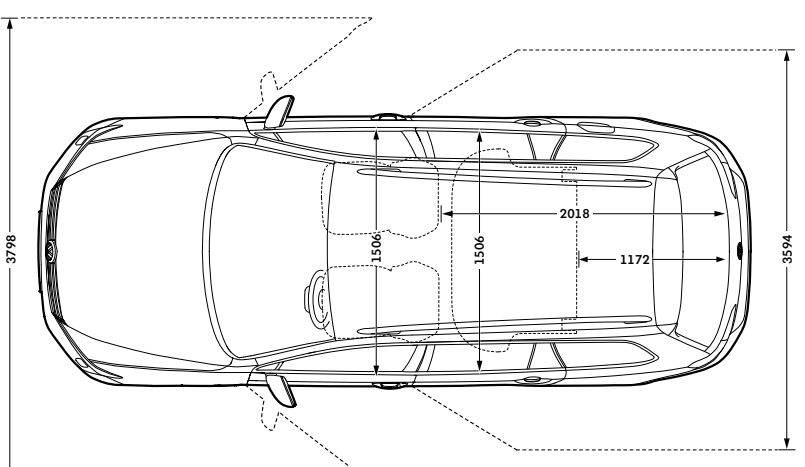
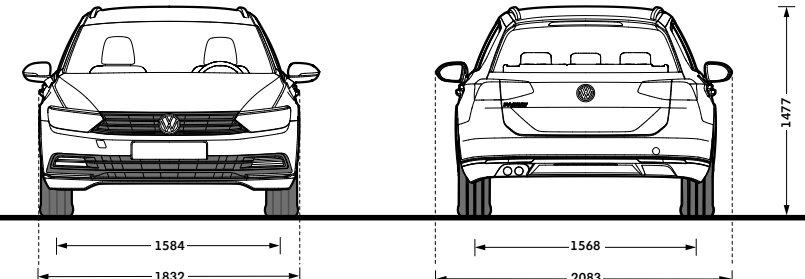
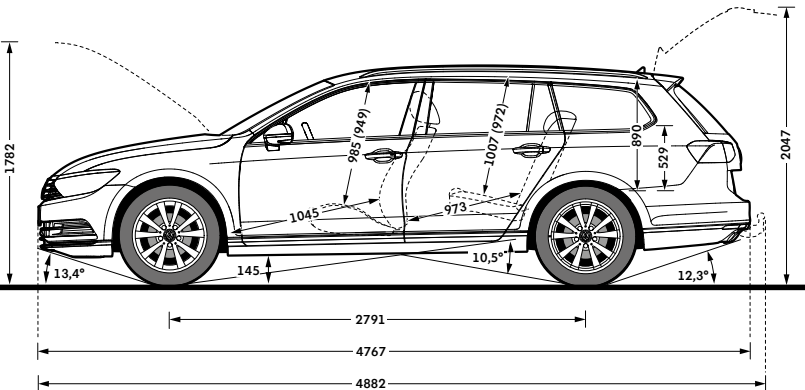


Exterior dimensions	New Passat Estate
Length, mm	4767
Width – including door mirrors, mm	2083
Width – opened front/rear doors, mm	3798/3594
Height – mm	1477
Height – opened bonnet/floor, mm	1782
Height – opened tailgate/floor, mm	2047
Wheelbase, mm	2791
Turning circle, mm	11700

Interior dimensions	
Effective headroom – front, mm (with sunroof)	985 (949)
Effective headroom – rear, mm (with sunroof)	1007 (972)
Elbow width, front, mm	1506
Elbow width, rear, mm	1506
Legroom front, mm	1045
Legroom rear, mm	973

Maximum luggage capacity, litres VDA measuring method using 200 x 100 x 50mm blocks	
With rear seats upright	650
With rear seats folded	1780

On illustrations, where arrows and figures are shown inside of the vehicle, the measurements are for interior dimensions. Where arrows and figures are shown outside of the vehicle, the measurements are for exterior dimensions.



Volkswagen service.

Three-year Warranty

All Volkswagen Passat models come with a three-year/90,000km warranty which protects your car against the failure of most mechanical and electrical components due to manufacturing defects. This comprises a two-year manufacturer's warranty with unlimited mileage plus a further one-year/90,000km (whichever is soonest) warranty*. Full details of the three-year warranty are available from your authorised Volkswagen dealer.

* All warranty work must be completed by an authorised Volkswagen dealer or repairer.

Three-year Paintwork Warranty

The paintwork of the Passat is covered against manufacturing defects for a period of three years. Naturally, the Passat must be cared for in compliance with the operating instructions which will be found in your vehicle handbook. Please consult your Volkswagen dealer for full warranty details.

Body Protection Warranty

The internal body sections and panels of the Passat are covered against rusting through from the inside for 12 years. Naturally, the Passat must be cared for in compliance with the operating instructions. Please consult your Volkswagen dealer for full warranty details.

Service Intervals for Engines

Full details of what checks and work are recommended at each service are contained in the Service Book and your dealer will be able to advise you of any particular requirements.

Approved Accessories

A comprehensive range of accessories from alloy wheels to carpet mats is available to complement the factory-fitted option list.

Volkswagen Finance

Volkswagen Finance offers a dedicated service to meet the needs of both the business user and the private motorist. We can help you choose the right type of finance and will tailor the package to meet your specific requirements. Please consult your Volkswagen dealer for details.

Volkswagen Assistance

Every new car is registered for Volkswagen Assistance for three years. This provides vehicle recovery in the unlikely event of a breakdown (subject to conditions).

Volkswagen Rental

For details, please contact your dealer.

CO₂ Emission

Increased weight of a vehicle, including higher trim levels and the addition of options will have an affect on the influence on the level of fuel consumption and CO₂ emissions produced. The CO₂ and fuel consumption figures are obtained from tests on a representative vehicle of the type, conducted and approved in accordance with Council Directive 80/1268/EEC as amended by Directive 1999/100/EC (or later) on the approximation of the laws of the member states relating to the carbon dioxide emissions and the fuel consumption of motor vehicles.

Please Note:

Some illustrations in this brochure do not necessarily reflect Irish specifications. Consequently, controls and some items of equipment are positioned differently for Ireland. The specifications contained in this brochure are for information purposes only as we cannot confirm the exact specifications of the vehicles. If you require any specific feature, you must consult your Volkswagen dealer who is regularly updated with any change in specification. Please check model availability and full specification details with your Volkswagen dealer prior to ordering.

