

The new Transporter



Commercial
Vehicles



A vehicle like no other.

Introducing the new Transporter.

Low fuel consumption.

Thanks to a new generation of Euro 5 engines.

Efficient BlueMotion Technology.

Available on our range of TDI and BiTDI engines.

Unique drive concept.

With the combination of both 4MOTION all-wheel drive and dual clutch direct shift gearbox (DSG).

The most off-road ready van in its class.

With the help of grippy 4MOTION all-wheel drive with Hill Descent Control and mechanical differential lock.

The largest load compartment in its class.

With the long wheelbase high roof offering a volume of 9.3m³.

The largest number of variants in its class.

Numerous roof height, wheelbase and seating combinations.

High levels of flexibility and functionality.

The kombi can be perfectly configured to combine both passenger and load carrying.



65 years of evolution.

Still leading the way.

New interior design.

Delivers car-like levels of style, comfort and quality.

Clever and versatile storage systems.

With numerous storage spaces throughout the interior.

Proven Volkswagen quality and durability.

Built with care using the best materials and workmanship.

An ergonomic and safe working environment.

Both robust and comfortable.

Advanced driver assistance systems.

From Brake Assist to our Driver Alert System and much more.



The new Transporter panel van and kombi.

Professional from every angle.

When we designed our first compact van some 65 years ago, Volkswagen Commercial Vehicles succeeded in capturing both the imagination and needs of professionals. Since then, each new generation of Transporter has added to the legacy.

And now, with the launch of our latest 6th generation Transporter, we've exceeded expectations again and created a van that's designed to lead the way. Its interior is packed full of innovations and modern-day technology to assist your working day. Its stylish exterior is contemporary and designed to make a statement. It's this constant evolution that sets the new Transporter apart as a technical trailblazer.



The new interior.

Delivering style comfort and quality.

Designed to impress, the new Transporter is packed with features that benefit comfort, convenience and offer assistance while you work. Step inside and you'll find a stylish new dashboard with plenty of storage solutions and a quality finish. Everything within the cab has been carefully thought-through – from ergonomic seating, to controls and functions that are arranged to be within easy reach. Combining the use of robust materials and high-quality production methods, just like its predecessors, the new Transporter's interior will stand the test of time.

Add to this a broad selection of radio and infotainment systems featuring up-to-the-minute technology, not to mention the latest advances in safety and you'll discover the new Transporter is a safe, comfortable and enjoyable place to spend your working day.

01 Two-seat front passenger bench with integral storage. All Transporter panel vans are supplied with a two-seat front passenger bench. As an option, the backrest can be fitted with a fold-down storage shelf.

02 App-Connect. You can easily and safely operate special apps using this interface. The screen of your smartphone can be shown on the radio system's display.

The space to tackle large and difficult jobs.

The new Transporter has the largest load compartment in its class.

Space for up to **3** Euro-pallets.

Up to **2,500kg** trailer weight.

Up to **1,331kg** payload.

Up to **9.3m³** load compartment volume.

Up to **2,975mm** load compartment length.

Up to **1,940mm** loading height.

With the new Transporter panel van offering two wheelbases and three roof heights, there's no need to compromise when it comes to space or access. The panel van load compartment volume varies from **5.8m³** for the short wheelbase low roof, to **9.3m³** for the long wheelbase high roof. With its rear seats removed, the flexible kombi is no less competent. Access is equally as impressive, with a range of rear end and side sliding door options offering a wide variety of ways to configure your van.



01



02



03

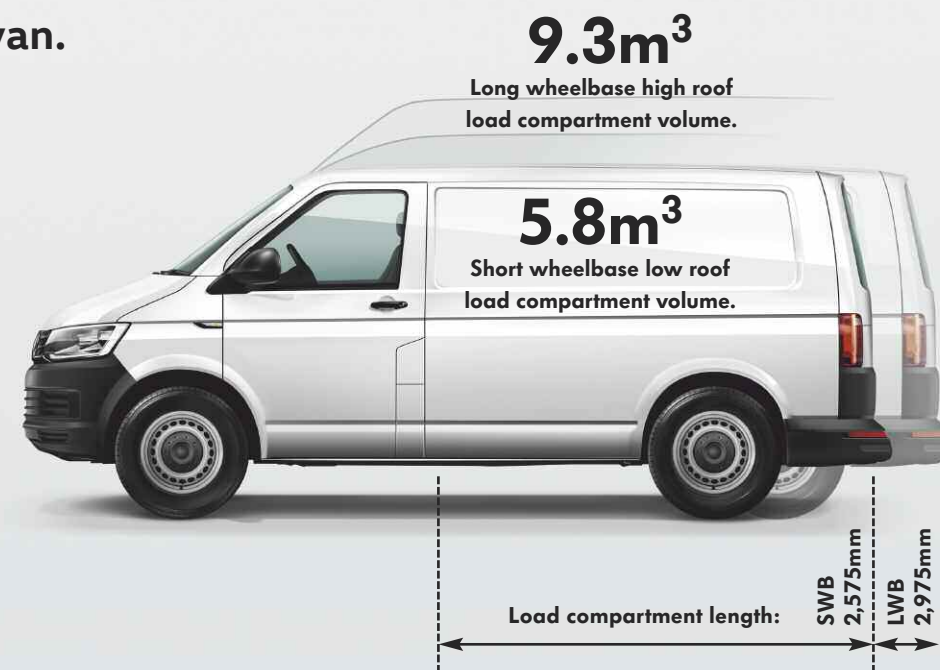


Multiple rear end solutions. For low and medium roof heights there's an optional solid rear tailgate (**01**) and glazed rear wing doors (**02**). For the high roof, solid high rear wing doors (**03**) are fitted as standard. Rear wing doors and tailgates are available with a selection of solid metal or glazed panels, while as an option, rear wing doors can feature an opening angle of 250°.

Transporter panel van.

Model variants.

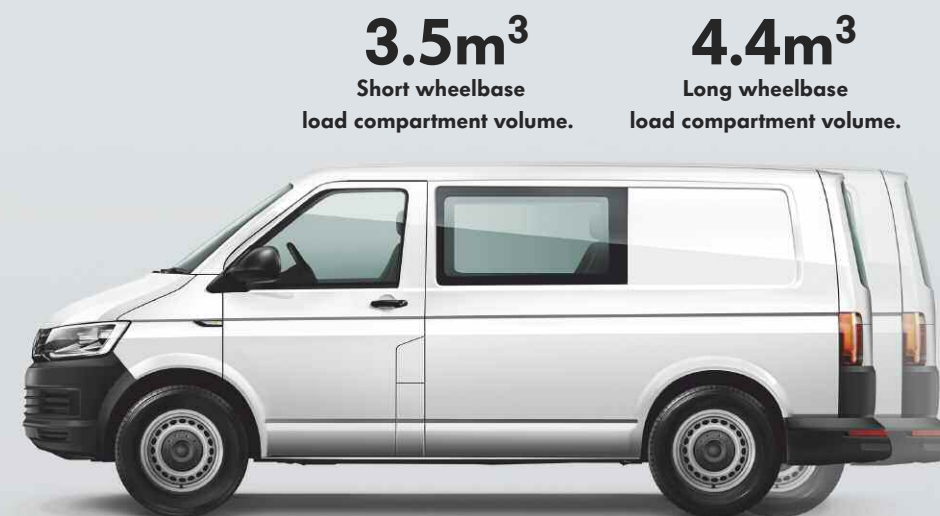
- 2 wheelbases.
- 3 roof heights.
- 2 seating combinations.
- Load compartment volume from 5.8m³ to 9.3m³.
- Maximum payload:
Short wheelbase 1,331kg.
Long wheelbase 1,274kg.



Transporter kombi.

Model variants.

- 2 wheelbases.
- 2 seating combinations.
- Load compartment volume from 3.5m³ to 4.4m³ (low roof with rear seats in place).
- Maximum payload:
Short wheelbase 1,224kg.
Long wheelbase 1,171kg.

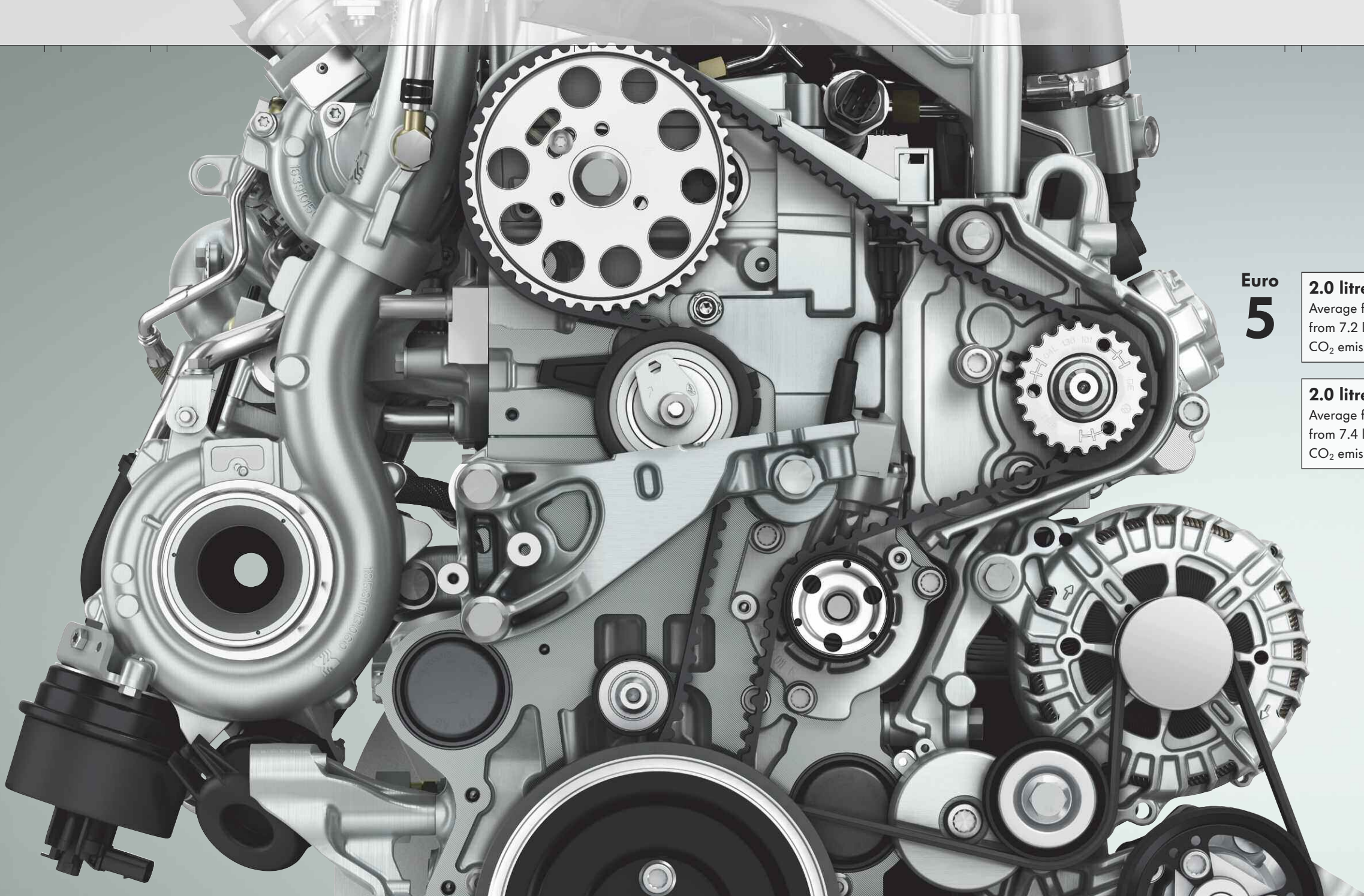


New TDI engines.

With extra low fuel consumption.

TDI and BiTDI common-rail diesel engines. The latest generation of engines provide excellent economy and an abundance of usable torque. Both fuel consumption and CO₂ emissions have been reduced without sacrificing driving dynamics.

BlueMotion Technology. Consisting of Start/Stop, regenerative braking and low rolling resistance tyres, BlueMotion Technology benefits both your pocket and the environment.



Euro
5

2.0 litre TDI (84HP)
Average fuel consumption:
from 7.2 l/100km.
CO₂ emissions: from 176g/km.

2.0 litre TDI (140HP)
Average fuel consumption:
from 7.4 l/100km.
CO₂ emissions: from 184g/km.

2.0 litre TDI (102HP)
Average fuel consumption:
from 7.2 l/100km.
CO₂ emissions: from 176g/km.

2.0 litre BiTDI (180HP)
Average fuel consumption:
from 7.5 l/100km.
CO₂ emissions: from 187g/km.

The most off-road ready van in its class.

With 4MOTION all-wheel drive and DSG.

The new Transporter offers a number of innovative features to help retain traction, optimum handling and outstanding steering response when encountering poor surface conditions.

A new generation of 4MOTION all-wheel drive. The advantages of the new Haldex clutch for the optional 4MOTION all-wheel drive include reduced weight, a decrease in fuel consumption and an improvement to vehicle handling and dynamics.

4MOTION all-wheel drive with DSG. The new Transporter is the only vehicle in its class that's available with 4MOTION all-wheel drive and a 7-speed, dual clutch direct shift gearbox (DSG). Available as an option, this combination enables smooth driving on rugged terrain, thanks to its fully automatic gear changes.

Mechanical differential lock. The mechanical differential lock is available for the rear axle together with the optional 4MOTION all-wheel drive. This helps to maintain traction when you encounter adverse conditions, such as rain, snow, mud or gravel.

Prepared for any scenario.

Advanced driver assistance systems.

The new Transporter is equipped with a number of innovative safety and driver assistance systems – all of which are activated in critical situations as a preventative measure.



Driver Alert System. Fitted as standard, the system registers deviation from normal steering patterns and uses visual and acoustic warnings to recommend that the driver takes a break.



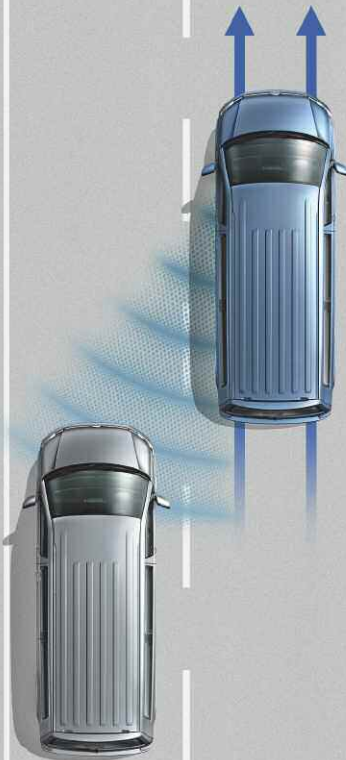
Brake Assist. Fitted as standard, the system registers the speed at which the brake pedal is pressed. During emergency braking, it ensures full brake pressure is applied more quickly.



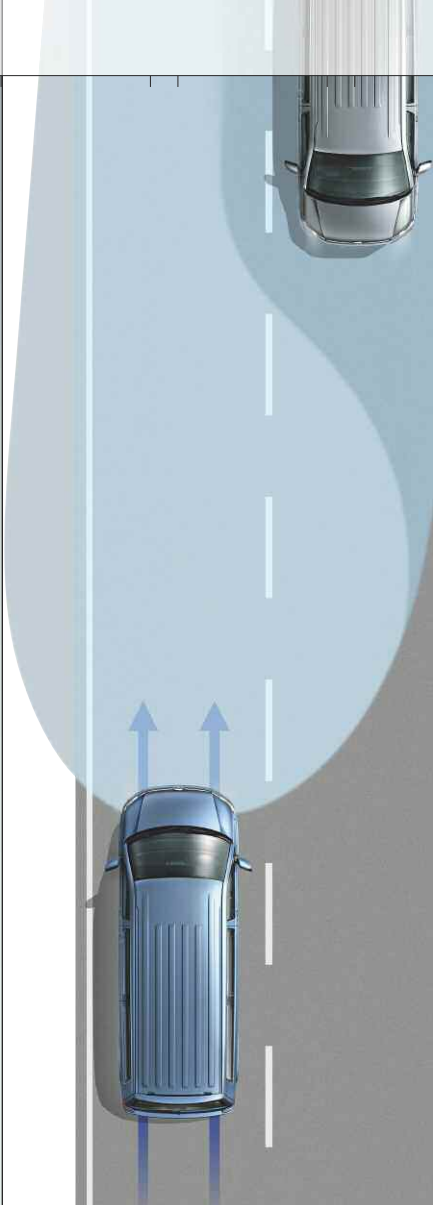
Rear-view camera. Displays a clear view behind the vehicle which aids parking. The rear-view camera is only available as an option in combination with a tailgate.



Parking sensors. Available as an option, audible signals warn the driver of obstacles to the front and rear of the vehicle. Distance is indicated visually on the radio display.



Lane Change Assist – Side Scan. Available as an option, Side Scan displays a warning signal on the exterior mirror as soon as one of its sensors detects a vehicle in a blind spot during a lane change.



High Beam Assist. Available as an option, High Beam Assist automatically dips the headlights and prevents dazzle for oncoming vehicles, or vehicles travelling ahead. At night time at speeds of above 60km/h, the system automatically switches the headlights to high beam.



Fog lights with integrated cornering lights. Available as an option, these help to illuminate curves and bends in the road ahead where the vehicle is turning.

Standard equipment and trimlines.

The highlights.



Standard across the range.
Standard equipment.

Audio and communications.

- Bluetooth® phone connectivity with trip computer and multi-function display.
- Composition Colour radio system with 5" touch-screen, single MP3 compatible CD drive, SD card slot, AUX-IN socket and four speakers.
- USB connection in glove compartment or storage shelf.

Cab area.

- ‘Austin’ cloth upholstery.
- Digital clock.
- Climatic air conditioning.
- Door mirrors, electrically heated and adjustable.
- Driver’s seat with height, lumbar, reach and rake adjustment.
- Dual passenger seat with storage.
- Electric front windows.
- Gear shift indicator.
- Interior light.
- Lockable glove compartment.
- Rev counter.
- Rubber floor covering.
- Start/Stop system with regenerative braking.
- Storage net on lower dash (passenger side).
- 12v sockets x 2.

Cargo area.

- Half-height load side lining in hardboard.
- Interior entry step.
- Interior roof trim in painted hardboard (low roof only).
- Load-lashing rings (six for short wheelbase and eight for long wheelbase).
- Rear door interior release lever.
- Rubber floor covering (kombi).
- Manual near-side sliding door.
- Sliding windows in near-side sliding door and opposite window (kombi).

- Steel flooring (panel van).
- Three-seat bench in first row (kombi).
- Two door activated interior lights (three with optional high roof).

Exterior.

- Front and rear towing eyes.
- Galvanised steel body.
- Black door mirrors and handles.
- Black front and rear bumpers.
- Heat insulating glass.
- Tailgate with heated window and wash-wipe (kombi).
- Unglazed rear wing doors with 180° door opening (panel van).
- 80-litre lockable fuel tank.

Safety and security.

- Anti-lock Braking System (ABS).
- Anti-theft alarm system.
- Automatic Post-Collision Braking System.
- Brake Assist.
- Driver Alert System.
- Driver and passenger front airbags (with passenger deactivation).
- Electronic Brakeforce Distribution (EBD).
- Electronic Differential Lock (EDL).
- Electronic Stabilisation Programme (ESP).
- Height-adjustable head restraints.
- Height and rake adjustable steering column.
- Hill Hold Assist.
- Remote central locking with interior locking, two remote folding keys and one rigid key.
- Traction Control System (TCS).
- Tyre pressure monitoring (kombi).

Wheels and tyres.

Wheels.

- 16" x 6.5J steel wheels.
- Black wheel centre caps.
- Full size steel spare wheel.
- Tool kit and jack.

Tyres.

- 215/65 R16 C low rolling resistance.

Equipment in addition to Transporter.

Trendline equipment.

Audio and communications.

- Multi-function display ‘Plus’.

Cab area.

- Armrests for driver’s seat.
- Comfort pack, including foldable grab handles on ‘A’ pillars, driver and front passenger seat side storage compartments, twin sun visors with vanity mirrors, two-tone horn, dimmable dashboard illumination and additional noise suppression measures.
- Cruise control.
- Leather steering wheel.
- ‘Simora’ cloth upholstery.

Cargo area.

- Full-height steel bulkhead (panel van).

Exterior.

- Body-coloured bumpers, mirrors and door handles.
- Rear parking sensors.

Wheels and tyres.

- New design full size wheel trims.

Equipment in addition to Trendline.

Highline equipment.

Cab area.

- Automatically dimming rear-view mirror with rain sensor.
- Automatic driving light control.
- Car-Net Guide & Inform.
- Coming home and leaving home function.
- Daytime running lights.
- Discover Media satellite navigation system.
- Heated windscreen.
- Leather multi-function steering wheel, gearknob and gaiter.

Exterior.

- Front and rear parking sensors.
- Front fog lights with cornering lights.

Safety and security.

- Lockable wheel bolts.

Wheels and tyres.

Wheels.

- 16" ‘Clayton’ alloy wheels.
- 17" ‘Richmond’ alloy wheels (3,200kg and/or 180HP engine).

Tyres.

- 215/65 R16 C low rolling resistance.
- 235/55 R17 C low rolling resistance (180HP).
- 215/60 R17 C all-weather (3,200kg).

16"

‘Clayton’ alloy wheels.
6.5J x 16 with 215/65 R16 tyres.



17"

‘Devonport’ alloy wheels.
7J x 17 with 235/55 R17 tyres.



18"

‘Springfield’ alloy wheels.
8J x 18 with 255/45 R18 tyres.



Wheels.

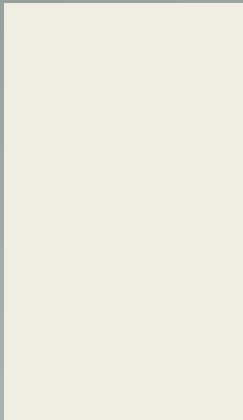
A selection of standard and optional alloy wheels are available.

The new Transporter offers a range of 16", 17" and 18" steel and alloy wheels. All wheels are fitted with low rolling resistance tyres, which help to reduce both fuel consumption and CO₂ emissions.

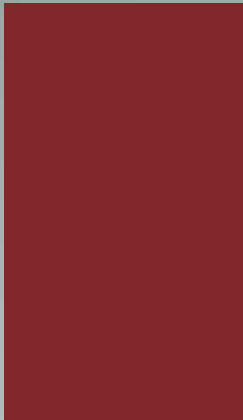
Solid paint finishes.

Paint and upholstery.

Formulated to withstand all that work can throw at it, the new Transporter’s paint and upholstery are designed to stand the test of time. As you’d expect from any Volkswagen, exterior paints offer a smooth and tough finish, while the interior upholstery is made from high-quality materials that are both robust and easy to clean.



Candy White.



Cherry Red.



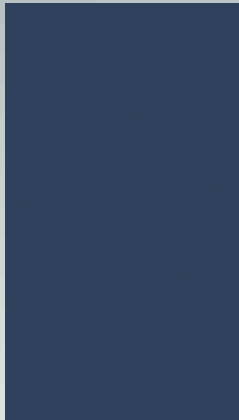
Grape Yellow.¹



Ontario Green.



Bright Orange.

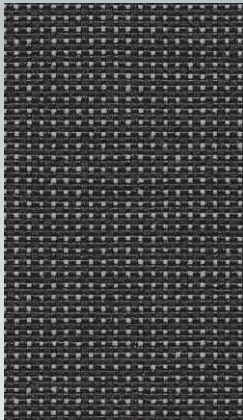


Deep Ocean.



Pure Grey.

Seat upholstery.



Austin.²
Titanium Black
Cloth.



Marathon.^{1, 3}
Moonrock
Robust cloth.

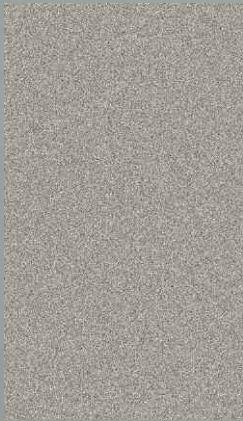


Leatherette.¹
Moonrock
Synthetic leather.

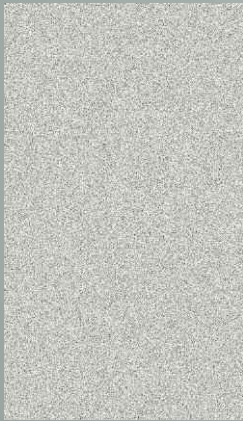


Simora.¹
Titanium Black
Cloth.

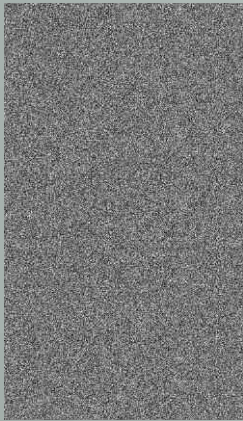
Metallic paint finishes.¹



Mojave Beige.



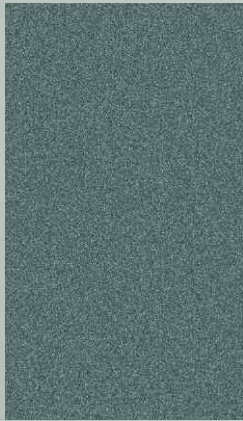
Reflex Silver.



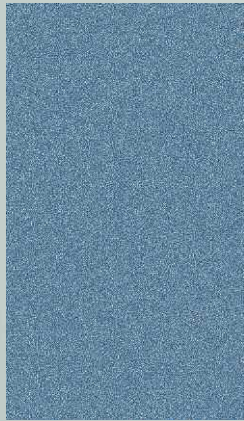
Indium Grey.



Chestnut Brown.



Bamboo Garden Green.



Acapulco Blue.



Starlight Blue.



Blackberry.

Pearl effect paint finishes.¹



Oryx White.⁴
Mother-of-pearl
effect paint.



Deep Black.
Pearl effect paint.

Interior colour.



Moonrock Grey.

¹ Available at extra cost. ² Also available in Moonrock. ³ Only available for the cab. ⁴ Available at a later date only in conjunction with rear wing doors. Please contact your local Volkswagen Commercial Vehicles retailer for details of exact specifications and optional extras.

The new Transporter

This brochure supersedes all previous publications.

Issue: September 2015

www.volkswagenvans.ie

Please note: The information and specifications contained within this brochure were correct at the time of printing and are for information purposes only. Some photographs illustrate pre-production vehicles and may show optional equipment or accessories. They may therefore vary in specification to final right-hand drive vehicles. Due to our continuous process of improvement, products are continually updated and changes may be made to the specifications from time to time. Please check with your authorised Volkswagen Commercial Vehicles retailer for current specifications on any vehicle before ordering. Print processes do not allow exact reproduction of the paint and upholstery colours.

